

CONTACT DETAILS

LAVA Metal Döküm San.Tic.A.Ş

Head Office: Safa Mah. Atatürk Cad. Yağız Sok No: 4
Yenidoğan - Sancaktepe - İstanbul / TURKEY

Tel: +90 216 312 2653 Fax: +90 216 312 0909

Factory: Eskişehir Organize Sanayi Bölgesi 22.Cadde No:3

26110 Eskişehir - TURKEY

Tel: +90 222 236 2610 Fax: +90 222 236 2609

SOCIAL MEDIA

facebook <http://www.facebook.com/LavaMutfagi>

twitter <http://www.twitter.com/LavaMutfagi>

You Tube <http://www.youtube.com/LavaMutfagi>

Blogger <http://www.LavaMutfagi.com>

WEB

www.lavametal.com.tr

satis@lavametal.com.tr

ONLINE SALES

www.lavashops.com

LAVA[®]
COOKING



LAVA 2013/2014 PRODUCT CATALOGUE

Organic Life Friendly[®]

CAST IRON COOKWARE
2013/2014 PRODUCT CATALOGUE



Made in Turkey





IN
EVERY
KITCHEN

LAVA[®]
COOKING

About LAVA®



LAVA – 40 years experience,
The mission is to combine high technology with 40 years experience in iron casting. Lava has a state-of-the-art factory in region for iron casting and enamelling.

LAVA is specialized for heating and appliance industry.
Core activity of Lava is to produce high-end iron casted and enamelled Pan Supports, Sauce Pans, Casseroles, Wok&Cookware, Skillet, Frying Pans and Grills.

LAVA own brand new Sinto and Disa moulding machine, electric melting, blasting/grinding, sand preparation and EPE enamelling units by the licence of Ferrotechnic. All are fully automated and CNC operated.

LAVA has 6000m² closed area factory with 15.000m² open area in Eskişehir Industrial Zone, manufacturing with ISO9001. Highly modern and flexible machinery ensure highest standards of quality and manufacturing capacity with considerable flexibility. Statistical process control and ERP/MRP system is applied by total quality management and continuous improvement programs for your volume product needs.

LAVA is dedicated to providing its customers with unparalleled service, logistics, flexibility, engineering, quality products that are cost effective and deliver optimum performance with continuous technical support and long term partnering.

Page 4 About Us

Page 6 Why LAVA? Why Cast Iron?

Page 16 Mini Casseroles

Mini Round Casseroles – Folk	17
Mini Round Casseroles – Trendy	19
Mini Round Casseroles – Concept	21
Mini Oval Casseroles – Trendy	23
Wooden Platter and Stand for Mini's	24

Page 28 Round Casseroles

Round Casseroles-Folk	29
Round Casseroles – Trendy	31
Round Casseroles -Glaze	33

Page 34 Oval Casseroles

Oval Casseroles – Folk	35
Oval Casseroles -Trendy	37

Page 38 Multi-Purpose Casseroles

Multi-Purpose Casseroles-Folk	39
Multi-Purpose Casseroles-Trendy	41
Multi-Purpose Casseroles -Glaze	43

Page 44 Sauce Pan, Round

Page 46 Bread – Terrine Pot

Page 48 Round Deep Casseroles

Page 50 Round Casseroles: Concept

Page 54 Frying Pans

Page 62 Grill Pans

Page 94 Toaster

Page 98 Dishes – Roaster

Page 108 Wooden Platter and Silicon Handles

Wooden Platter	109
Cast Iron Platter	110
Silicon Handles	111

Page 114 Barbeque

Page 116 Barbeque Grill

Page 120 Round Dish

Page 124 Round Bowl

Page 126 Mini Hot Pot

Page 128 Service Dishes

Page 142 Gastronorm Dishes

Page 144 Fish Plate

Page 148 Pizza-Krep-Pancake Plate

Page 152 Turkish Wok

Page 158 Hot Plate

Page 172 Mini Plates and Dishes

Fajita Plate	173
Oval Dish	181
Round Dish	185
Round Skillet	197
Square Dish	201
Rectangular Dish	204
Souffle or Souce Pot	207

Page 208 Tortilla and Souce Cups

Page 210 Wooden Service Boards/ Platters
Stands / Servicing Platter

Page 226 Chef Rafet Ince Says

The flat lid adds the possibility to use water or ice outside, on top, to increase the condensation when the chef requires this effect.



The use of a heavy lid will help to keep steam inside.



Its flat shape with an peaks inside surface allows the condensed steam to be distributed evenly over all the food.



WHY LAVA?



LAVA[®]
COOKING

**Slow cooking.
Fast grilling.**

Due to its low conductivity the cast iron transfers heat four times slower than aluminium: it is ideal for slow cooking, allowing the food to cook gradually, without losing moisture and avoiding shrinkage.

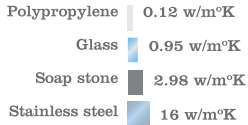
Due to its high specific heat the cast iron heats up its surface twice faster than aluminium.

Ideal for preparing food that can be seared and grilled very quickly whilst remaining almost raw inside.

WHY CAST IRON?

Enamelled Cast Iron.

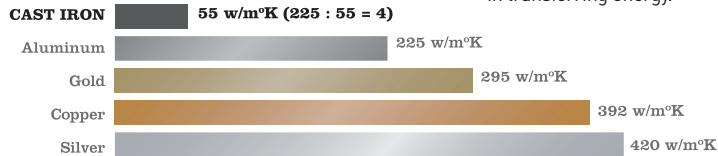
The new tendencies in professional kitchens, trying to recover the most traditional recipes using the technologies of the 21st century



CONDUCTIVITY

The capacity of a material to transmit heat.

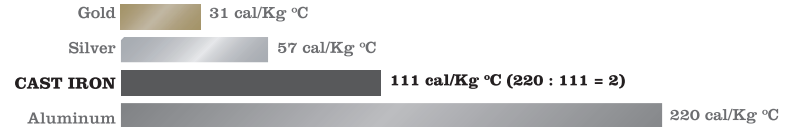
Cast iron is 4 times less efficient than aluminium in transferring energy.



SPECIFIC HEAT

The amount of heat required to increase temperature.

Cast iron increases temperature twice faster than aluminium.



SUMMARIZING

Enamelled Cast Iron has:

- a medium- low conductivity
- a very high specific heat
- top magnetic properties
- fuses at very high melting point (1200 C°)
- vitrifying enamel at 800°C melts with its surface, giving the hardest protection a pot can have.





WHY LAVA?

LAVA[®]
COOKING

**Slow
Gentle Cooking.
Charming
Presentation.**

Cook & Serve

The slow heat transfer and the weight of the cast iron gives a high temperature retention.

Give your table the live image of a kitchen, colourful and decorative while staying warm for a long time.

Invite your guests to share a pot or give them an individual pot, make your dining room or your buffet come alive!

WHY CAST IRON?



**Fast Grilling.
Charming
Presentation.**

Cook & Serve

In front of your guests, on the table, on the buffet, at a party, on whatever the occasion, your guests will share the kitchen spirit and enjoy using bowls, pans and plates with long-lasting heat.

And enjoy Slow Eating, too!



Cook & Serve



WHY LAVA?

Approved Quality

Lava has:

- * RoHS, REACH certification and doesn't contain any hazardous material; like lead and cadmium
- * Compliance LFGB – German Standards
- * Compliance FDA – American Standards
- * Compliance 84/500/EEC – European Standards
- * Successfully tested for Cold Citric Acid, Boiling Citric Acid, water vapour, Boiling Water, Detergent Solutions.
- * CE : declaration of conformity
- * ISO9001

Suitable For Use In All Cooker and Oven Types

LAVA enamel cast iron pots and pans can be used in all heat sources. Gas, electrical, solid or radiant plate, glass-ceramic, vitro-ceramic and those stoves that work with induction and gas, oil, coal or wood. They must not be used in microwave ovens.



OVEN



ELECTRIC



GAS



RADIANT



INDUCTION



HALOGEN



DISHWASHER



FOODSAFE

WHY CAST IRON?



Environment - Friendly...

Cast iron is 100% recyclable as an environment-friendly material. Also, it provides energy saving as it preserves heat for a long period of time.

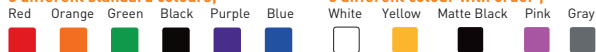
It Keeps Hot as Hot, Cold as Cold

LAVA enamel cast iron pots and pans can protect heat effectively. It will be your advantage to lower settings for cooking at both countertop stoves and ovens. Lava pot with closed lid on the table will continue to protect the heat of food for a second serving. It can be useful for frozen foods as well. LAVA enamel cast iron cookware can be used for keeping foods cold. When pot is stored in the fridge for a short period of time, it will adequately keep the food cold for serving even in summer days.

Elegant Designs, Ample Variety and Colourful

Elegant designs and enamel coating color varieties provide complementary particulars for use in kitchen or dining room and offer excellent surface quality. Black matt enamel on internal surface prepares real taste for you. Ample variety and continues product development for your requirements.

6 different standard colours;



5 different colour with order ;



Ergonomic Handles and Knobs

Cast iron and stainless steel knobs have aesthetic appearance. They are designed ergonomically for easy grip and handling. They are suitable for use in all cookers and ovens (except for microwave oven). Be careful! They heat up during cooking. While handling, dry thick cloth or oven mitten should be used.

LAVA Provide Excellent Consistency Between Casting and Enamelling and High Quality

New advanced technology machines, cutting edge processes, experience, knowledge and high-quality at LAVA enamel cast iron pots and pans. Technically, it is a very difficult and trouble some job to combine cast with enamel. The reason is that, since expansion coefficients of the both are different, the cast material dilated in the coating after firing will crack the coating.

However;

Enamel technology by LAVA has electrophoretic enamel coating facility which is available at only a few companies around the globe. Therefore, it is more durable, practical and technically more superior than enamel structure of its rivals. It is easy and practical to clean. It can be washed in dishwasher. You would not encounter any performance problem.

WHY LAVA?



From Generation to Generation

LAVA cast-iron pots and pans are durable. With proper use and care, you can utilize your pots and pans at your kitchen for the whole lifetime and even leave them to your children and grandchildren as a pleasant memory.

Why do Cast Iron Pan & Pots Add Taste?

No cookware can produce foods on the oven with as excellent taste as LAVA enamel cast iron pots, pans and their derivatives. LAVA enamel pots and pans with thick base are made of cast-iron which is a material with low specific heat. LAVA cast-iron pots and pans can reach equal cooking degree from all points as they can overheat considerably much and they are thick.

Traditional Cooking

LAVA enamel cast iron pots and pans are effective for traditional cooking at minimum heat as well as for boiling at high surface heat. It is your choice!

LAVA: Choice of Professionals

LAVA enamel cast iron pots and pans are manufactured in LAVA facilities in Eskişehir through 40 years of experience and knowledge and the most advanced casting and enamelling technology in Turkey and in the region. Each pot and pan is controlled manually for a few times during production to ensure full compliance with quality standards.

They are tested in advanced LAVA laboratories for tens of times. All enamels used by LAVA comply with applicable International Standards. While scrap and low-quality iron is used in the production of Far East-made cast pots and pans, LAVA enamel cast iron pots and pans are made of the highest quality cast iron in the world. They do not contain any harmful additive.

Non-Stick, Seals...

Meat cooked at LAVA enamel cast iron pans never sticks to the pan. There are two reasons for this. First, high heat on the surface of pan seals the surface of meat. This retains the taste, water and all nutritional values of the food sealed. (It forms a dry and hard layer in a short period of time or briefly, let's say it browns).

So, while the meat first sticks, it looses within a couple of minutes - after the humidity on its surface is removed. Secondly, only some part of the meat comes into contact with the pan thanks to the grill drains on surface ensuring that it is easy to separate meat from pan and it forms nice burning marks on meat.

WHY CAST IRON?



Meat With Grill Taste...

The important point for cooking is overheating degree of pot and pan. Cast iron is unique in this regard. Meat grilled at barbecue is more delicious than the meat cooked at any teflon pan. Likewise, meat grilled at LAVA enamel cast iron grill pan is as delicious as the barbecue. It may even be very difficult to notice the difference.

Why are LAVA Pots & Pans So Heavy?

First of all, a good cast iron pot and pan should be quite heavy. They should have thick base. As the cast iron that absorbs more heat is thick, they are designed in the construction that reaches equal cooking degree from all points.

Easy to Clean

LAVA Cast-Iron Pots and Pans can be washed in dishwashing machine thanks to High Enamel Coating Technology available at only a few companies around the world and can be cleaned practically and easily. (please read cleaning and care instructions)

No Loss of Vitamin, Mineral and Flavor in Meal

Steam generated in pot condenses thanks to the special lid design of LAVA and is mixed with food again. When cooking methods are used correctly, it does not only produce wonderful flavors and tastes, but also protects nutritional values in your meal contributing to a healthy diet.

More Healthy and More Delicious Meals...

LAVA enamel cast iron pots and pans can be used for all recipes such as soups, roasts, grills, rice, casseroles and desserts, cakes and baked breads. Cast iron is suitable for all kinds of cooking techniques. As the heat will equally spread to the whole surface, it provides perfect cooking for meals that require cooking at medium heat for a long time such as stew, meals with olive oil etc. Likewise, meats cooked with cast iron give barbecue taste and vegetables have roasted taste.



“LAVA COOKING stands for innovative, top-quality products, traditionally manufactured on the basis of generations of experience.”



IN
EVERY
KITCHEN

LAVA[®]
COOKING



Mini Casseroles



Mini Round Casseroles



Folk



Mini Round Casseroles - Folk Series

Reference	Description	Material / Finishing	Size (cm.)	Capacity (litre)	Product Weights (kg.)	Portion (person)
LVYTC 10K1	Mini Casserole Dia.(Ø)10 cm.	Enamelled Cast Iron 3 coat, 2 fire Material Thickness: Bottom=5mm. Edges=4mm.	(Ø)10	0,35	1,15	1

Organic Life Friendly®



Mini Casseroles



Mini Round Casseroles

Trendy



Red [R]



Green [G]



Blue [B]



Orange [O]



Yellow [Y]



Purple [P]



Black [BL]



White [W]



Gray [G]



Mini Round Casseroles - Trendy Series

Reference	Description	Material / Finishing	Size (cm.)	Capacity (litre)	Product Weights (kg.)	Portion (person)
LVYTC 10 K2	Mini Casserole Dia.(Ø)10 cm.	Enamelled Cast Iron 3 coat, 2 fire Material Thickness: Bottom=5mm. Edges=4mm.	(Ø)10	0,35	1,15	1

Organic Life Friendly®



Lava Concept

Mini Casseroles: Concept



Mini Round Casseroles: Concept



UltraLight



Mini Round Casseroles: Concept

Reference	Description	Material / Finishing	Size (cm.)	Capacity (litre)	Product Weights (kg.)	Portion (person)
LVYTC 10 K6	Mini Casserole - Dia.(Ø)10 cm. w / stoneware lid	Enamelled Cast Iron 3 coat, 2 fire Material Thickness: Bottom=5mm. Edges=4mm.	Ø110	0,35	0,89	1

Organic Life Friendly®



Mini Casseroles



Mini Oval Casseroles

Trendy



Red (R)



Green (G)



Blue (B)



Orange (O)



Yellow (Y)



Purple (P)



Black (BL)



White (W)



Gray (G)



Mini Oval Casseroles - Trendy Series

Reference	Description	Material / Finishing	Size (cm.)	Capacity (litre)	Product Weights (kg.)	Portion (person)
LV O TC 10 K2	Mini Casserole, Oval Dimensions w=12 h=6 d=9cm.	Enamelled Cast Iron 3 coat, 2 fire Material Thickness: Bottom=5mm. Edges=4mm.	w=12 h=6 d=9	0,42	1,45	1

Organic Life Friendly®



Wooden Platter and Stand for Mini's

Wood



Wooden Stand

Reference	Description	Material / Finishing	Size (cm.)	Capacity (litre)	Product Weights (kg.)	Portion (person)
LVAS 101	Wooden Stand for 3.ea. Mini Dia.10cm. Casserole	Wooden / Natural Color	for 3 x (Ø)10	-	1,08	-
LVAS 102	Wooden Stand for 1.ea. Mini Dia.10cm. Casserole	Wooden / Natural Color	for 1 x (Ø)10	-	0,54	-

Wooden Platter and Stand for Mini's

Wood



Wooden Platter

Reference	Description	Material / Finishing	Size (cm.)	Capacity (litre)	Product Weights (kg.)	Portion (person)
LV AS 103	Wooden Platter for Mini Casserole Dia.10-12cm.	Wooden / Natural Color	for 1 x [Ø]10-12	-	0,3	-
LV AS 104	Wooden Platter for Oval Mini Casserole	Wooden / Natural Color	for 1 x [Ø]10-12 oval	-	0,32	-

Organic Life Friendly®

25



“By using sustainable, superior materials and modern production techniques, lifelong cooking pleasure is guaranteed.”



**IN
EVERY
KITCHEN**

LAVA[®]
COOKING



Round Casseroles



Round Casseroles



Folk

CAST
IRON



Red (R)



Blue (B)



Orange (O)



Black (BL)



Purple (P)



Green (G)

Round Casseroles - Folk Series

Reference	Description	Material / Finishing	Size (cm.)	Capacity (litre)	Product Weights (kg.)	Portion (person)
LVYTC 20 K1	Round Casserole Dia.(Ø)20cm.	Enamelled Cast Iron 3 Coat, 2 Fire Material Thickness: Bottom=5mm. Edges=4mm.	(Ø)20	2,6	4,21	2-3
LVYTC 24 K1	Round Casserole Dia.(Ø)24cm.	Enamelled Cast Iron 3 Coat, 2 Fire Material Thickness: Bottom=5mm. Edges=4mm.	(Ø)24	4,5	5,41	4-5
LVYTC 28 K1	Round Casserole Dia.(Ø)28cm.	Enamelled Cast Iron 3 Coat, 2 Fire Material Thickness: Bottom=5mm. Edges=4mm.	(Ø)28	6,7	7,26	6-8

Organic Life Friendly®



Round Casseroles



CAST
IRON



Round Casseroles



Trendy



Red (R)



Blue (B)



Orange (O)



Black (BL)



Purple (P)



Green (G)

Round Casseroles - Trendy Series

Reference	Description	Material / Finishing	Size (cm.)	Capacity (litre)	Product Weights (kg.)	Portion (person)
LVYTC 12 K2	Round Casserole Dia.(Ø)12cm.	Enamelled Cast Iron 3 Coat, 2 Fire Material Thickness: Bottom=5mm. Edges=4mm.	(Ø)12	0,55	1,54	1
LVYTC 14 K2	Round Casserole Dia.(Ø)14cm.	Enamelled Cast Iron 3 Coat, 2 Fire Material Thickness: Bottom=5mm. Edges=4mm.	(Ø)14	0,8	2,07	1-2
LVYTC 16 K2	Round Casserole Dia.(Ø)16cm.	Enamelled Cast Iron 3 Coat, 2 Fire Material Thickness: Bottom=5mm. Edges=4mm.	(Ø)16	1	2,64	1-2
LVYTC 18 K2	Round Casserole Dia.(Ø)18cm.	Enamelled Cast Iron 3 Coat, 2 Fire Material Thickness: Bottom=5mm. Edges=4mm.	(Ø)18	1,7	2,91	1-2
LVYTC 20 K2	Round Casserole Dia.(Ø)20cm.	Enamelled Cast Iron 3 Coat, 2 Fire Material Thickness: Bottom=5mm. Edges=4mm.	(Ø)20	2,6	4,34	2-3
LVYTC 24 K2	Round Casserole Dia.(Ø)24cm.	Enamelled Cast Iron 3 Coat, 2 Fire Material Thickness: Bottom=5mm. Edges=4mm.	(Ø)24	4,5	5,76	4-5
LVYTC 28 K2	Round Casserole Dia.(Ø)28cm.	Enamelled Cast Iron 3 Coat, 2 Fire Material Thickness: Bottom=5mm. Edges=4mm.	(Ø)28	6,7	7,79	6-8
LVYTC 32 K2	Round Casserole Dia.(Ø)32cm.	Enamelled Cast Iron 3 Coat, 2 Fire Material Thickness: Bottom=5mm. Edges=4mm.	(Ø)32	10	9,61	12-16

Organic Life Friendly®

Round Casseroles



Round Casseroles



Glaze

CAST
IRON



Round Casseroles - Glaze Series

Reference	Description	Material / Finishing	Size (cm.)	Capacity (litre)	Product Weights (kg.)	Portion (person)
LVYTC 20 K3	Round Casserole with Glass Lid Dia.(Ø)20cm.	Enamelled Cast Iron 3 Coat, 2 Fire Material Thickness: Bottom=5mm. Edges=4mm.	(Ø)20	2,6	3,65	2-3
LVYTC 24 K3	Round Casserole with Glass Lid Dia.(Ø)24cm.	Enamelled Cast Iron 3 Coat, 2 Fire Material Thickness: Bottom=5mm. Edges=4mm.	(Ø)24	4,5	4,95	4-5
LVYTC 28 K3	Round Casserole with Glass Lid Dia.(Ø)28cm.	Enamelled Cast Iron 3 Coat, 2 Fire Material Thickness: Bottom=5mm. Edges=4mm.	(Ø)28	6,7	6,14	6-8

Organic Life Friendly®



Oval Casseroles



Oval Casseroles



Folk



Red (R)

Blue (B)

Orange (O)

Black (BL)

Purple (P)

Green (G)

Oval Casseroles - Folk Series

Reference	Description	Material / Finishing	Size (cm.)	Capacity (litre)	Product Weights (kg.)	Portion (person)
LV O TC 25 K1	Oval Casserole Dia.(Ø)25cm.	Enamelled Cast Iron 3 Coat, 2 Fire Material Thickness: Bottom=5mm. Edges=4mm.	(Ø)25	3,3	5,46	4
LV O TC 27 K1	Oval Casserole Dia.(Ø)27cm.	Enamelled Cast Iron 3 Coat, 2 Fire Material Thickness: Bottom=5mm. Edges=4mm.	(Ø)27	4	5,92	4-6
LV O TC 29 K1	Oval Casserole Dia.(Ø)29cm.	Enamelled Cast Iron 3 Coat, 2 Fire Material Thickness: Bottom=5mm. Edges=4mm.	(Ø)29	4,8	6,57	6

Organic Life Friendly®

35



Oval Casseroles



Oval Casseroles



Trendy

CAST
IRON



Red (R)



Blue (B)



Orange (O)



Black (BL)



Purple (P)



Green (G)

Oval Casseroles - Trendy Series

Reference	Description	Material / Finishing	Size (cm.)	Capacity (litre)	Product Weights (kg.)	Portion (person)
LV O TC 25 K2	Oval Casserole Dia.(Ø)25cm.	Enamelled Cast Iron 3 Coat, 2 Fire Material Thickness: Bottom=5mm. Edges=4mm.	(Ø)25	3,3	5,44	4
LV O TC 27 K2	Oval Casserole Dia.(Ø)27cm.	Enamelled Cast Iron 3 Coat, 2 Fire Material Thickness: Bottom=5mm. Edges=4mm.	(Ø)27	4	5,88	4-6
LV O TC 29 K2	Oval Casserole Dia.(Ø)29cm.	Enamelled Cast Iron 3 Coat, 2 Fire Material Thickness: Bottom=5mm. Edges=4mm.	(Ø)29	4,8	6,78	6

Organic Life Friendly®



Multi-Purpose Casseroles



Multi-Purpose Casseroles



Folk



Red (R)



Blue (B)



Orange (O)



Black (BL)



Purple (P)



Green (G)

Multi-Purpose Casseroles - Folk Series

Reference	Description	Material / Finishing	Size (cm.)	Capacity (litre)	Product Weights (kg.)	Portion (person)
LVY ST 24 K1	Multi-Purpose Casseroles Dia.(Ø)24cm.	Enamelled Cast Iron 3 Coat, 2 Fire Material Thickness: Bottom=5mm. Edges=4mm.	(Ø)24	2,4	4,4	4
LVY ST 28 K1	Multi-Purpose Casseroles Dia.(Ø)28cm.	Enamelled Cast Iron 3 Coat, 2 Fire Material Thickness: Bottom=5mm. Edges=4mm.	(Ø)28	3,4	5,76	4-6



Multi-Purpose Casseroles



Multi-Purpose Casseroles



Trendy



CAST
IRON



Red (R)



Blue (B)



Orange (O)



Black (BL)



Purple (P)



Green (G)

Multi-Purpose Casseroles - Trendy Series

Reference	Description	Material / Finishing	Size (cm.)	Capacity (litre)	Product Weights (kg.)	Portion (person)
LVY ST 24 K2	Multi-Purpose Casseroles Dia.(Ø)24cm.	Enamelled Cast Iron 3 Coat, 2 Fire Material Thickness: Bottom=5mm. Edges=4mm.	(Ø)24	2,4	4,56	4
LVY ST 28 K2	Multi-Purpose Casseroles Dia.(Ø)28cm.	Enamelled Cast Iron 3 Coat, 2 Fire Material Thickness: Bottom=5mm. Edges=4mm.	(Ø)28	3,4	6,41	4-6



Multi-Purpose Casseroles



Multi-Purpose Casseroles



Glaze



Multi-Purpose Casseroles - Glaze Series

Reference	Description	Material / Finishing	Size (cm.)	Capacity (litre)	Product Weights (kg.)	Portion (person)
LVY ST 24 K3	Multi-Purpose Casseroles with Glass Lid, Dia.(Ø)24cm.	Enamelled Cast Iron 3 Coat, 2 Fire Material Thickness: Bottom=5mm. Edges=4mm.	(Ø)24	2,4	3,81	4
LVY ST 28 K3	Multi-Purpose Casseroles with Glass Lid, Dia.(Ø)28cm.	Enamelled Cast Iron 3 Coat, 2 Fire Material Thickness: Bottom=5mm. Edges=4mm.	(Ø)28	3,4	5,08	4-6



Sauce Pan, Round



Sauce Pan, Round



CAST
IRON



Red (R)



Green (G)



Blue (B)



Orange (O)



Purple (P)



Black (BL)

Sauce Pan, Round

Reference	Description	Material / Finishing	Size (cm.)	Capacity (litre)	Product Weights (kg.)	Portion (person)
LVY SOS 16 K2	Sauce Pan - Integral w/ metal handles dia.(Ø)16 cm.	Enamelled Cast Iron 3 coat, 2 fire Material Thickness: Bottom=5mm. Edges=4mm.	(Ø)16	1	2,59	1-2
LVY SOS 16 K3	Sauce Pan - Integral w/ metal handles and glass lid. dia.(Ø)16 cm.	Enamelled Cast Iron 3 coat, 2 fire Material Thickness: Bottom=5mm. Edges=4mm.	(Ø)16	1	2,26	1-2



Bread - Terrine Pot



Bread - Terrine Pot



CAST
IRON



Red (R)



Green (G)



Blue (B)



Black (BL)



Purple (P)



Orange (O)

Bread - Terrine Pot

Reference	Description	Material / Finishing	Size (cm.)	Capacity (litre)	Product Weights (kg.)	Portion (person)
LVP EK 826	Bread / Terrine Pot, 8,5x26,5cm. h=6cm.	Enamelled Cast Iron 3 coat, 2 fire Material Thickness: Bottom=5mm. Edges=4mm.	8,5x26,5	1	2,85	2-4
LVAS 111	Bread / Terrine Pot, 8,5x26,5cm. h=6cm. and Wooden Service Stand	Enamelled Cast Iron 3 coat, 2 fire Material Thickness: Bottom=5mm. Edges=4mm.	8,5x26,5	1	3,43	2-4



Round Deep Casseroles



Round Deep Casseroles - (Ø)28

Reference	Description	Material / Finishing	Size (cm.)	Capacity (litre)	Product Weights (kg.)	Portion (person)
LV Y KZ 28 K0	Round Deep Casserole Dia.(Ø)28 cm. 4lt.	Enamelled Cast Iron 1coat 1fire Material Thickness: Bottom=4mm. Edges=3mm.	(Ø)28	4	4,20	6-8
LV Y KZ 28 K3	Round Deep Casserole With Glass Lid Dia.(Ø)28 cm. 4lt.	Enamelled Cast Iron 1coat 1fire Material Thickness: Bottom=4mm. Edges=3mm.	(Ø)28	4	5,50	6-8

48

Organic Life Friendly®

(Please contact with sales department for (Ø)32 cm. 8 lt and (Ø)34 cm. 10 lt.)

Round Deep Casseroles



Round Deep Casseroles - (Ø)30

Reference	Description	Material / Finishing	Size (cm.)	Capacity (litre)	Product Weights (kg.)	Portion (person)
LV Y KZ 30 K0	Round Deep Casserole Dia.(Ø)30 cm. 6lt.	Enamelled Cast Iron 1coat 1fire Material Thickness: Bottom=4mm. Edges=3mm.	(Ø)30	6	5	8-12
LV Y KZ 30 K3	Round Deep Casserole With Glass Lid Dia.(Ø)30 cm. 6lt.	Enamelled Cast Iron 1coat 1fire Material Thickness: Bottom=4mm. Edges=3mm.	(Ø)30	6	6,30	8-12

[Please contact with sales department for (Ø)32 cm. 8 lt and (Ø)34 cm. 10 lt.]



Round Casseroles: Concept



Round Casseroles: Concept

UltraLight



Round Casseroles: Concept

Reference	Description	Material / Finishing	Size (cm.)	Capacity (litre)	Product Weights (kg.)	Portion (person)
LVCP TC 24 K5	CONCEPT Round Casserole dia.(Ø)24 cm. w/ cast iron lid	Enamelled Cast Iron 3 coat, 2 fire Material Thickness: Bottom=4mm. Edges=3mm.	(Ø)24	2,5	3,22	3-4
LVCP STC 24 K5	CONCEPT Round Shallow Casserole dia.(Ø)24 cm. w/ cast iron lid	Enamelled Cast Iron 3 coat, 2 fire Material Thickness: Bottom=4mm. Edges=3mm.	(Ø)24	2	2,94	2-3

Organic Life Friendly®



Round Casseroles: Concept

UltraLight



Round Casseroles: Concept

Reference	Description	Material / Finishing	Size (cm.)	Capacity (litre)	Product Weights (kg.)	Portion (person)
LVCP TC 24 K6	CONCEPT Round Casserole dia.(Ø)24 cm. w/ stoneware lid	Enamelled Cast Iron 3 coat, 2 fire Material Thickness: Bottom=4mm. Edges=3mm.	(Ø)24	2,5	2,77	3-4
LVCP STC 24 K6	CONCEPT Round Shallow Casserole dia.(Ø)24 cm. w/ stoneware lid	Enamelled Cast Iron 3 coat, 2 fire Material Thickness: Bottom=4mm. Edges=3mm.	(Ø)24	2	2,49	2-3

52

Organic Life Friendly®

* Possible to customize stoneware lid design.

Round Casseroles: Concept



UltraLight



Round Casseroles: Concept

Reference	Description	Material / Finishing	Size (cm.)	Capacity (litre)	Product Weights (kg.)	Portion (person)
LVCP TC 24 K3	CONCEPT Round Casserole dia.(Ø)24 cm. w/ glass lid	Enamelled Cast Iron 3 coat, 2 fire Material Thickness: Bottom=4mm. Edges=3mm.	(Ø)24	2,5	2,87	3-4
LVCP STC 24 K3	CONCEPT Round Shallow Casserole dia.(Ø)24 cm. w/ glass lid	Enamelled Cast Iron 3 coat, 2 fire Material Thickness: Bottom=4mm. Edges=3mm.	(Ø)24	2	2,58	2-3

Organic Life Friendly®

53



Frying Pans





Frying Pans



Frying Pans

Reference	Description	Material / Finishing	Size (cm.)	Capacity (litre)	Product Weights (kg.)	Portion (person)
LVYTV 16 K0	Frying Pan Ø16 Integral w/ Metal Handles	Enamelled Cast Iron 3 coat, 2 fire Material Thickness: Bottom=5mm. Edges=4mm.	[Ø]16	0,42	1,41	1
LVYTV 20 K0	Frying Pan Ø20 Integral w/ Metal Handles	Enamelled Cast Iron 3 coat, 2 fire Material Thickness: Bottom=5mm. Edges=4mm.	[Ø]20	0,8	1,97	1-2
LVYTV 24 K0	Frying Pan Ø24 c/w Wooden Handles	Enamelled Cast Iron 3 coat, 2 fire Material Thickness: Bottom=5mm. Edges=4mm.	[Ø]24	1,5	2,65	4
LVYTV 28 K0	Frying Pan Ø28 c/w Wooden Handles	Enamelled Cast Iron 3 coat, 2 fire Material Thickness: Bottom=5mm. Edges=4mm.	[Ø]28	2,5	3,69	4-6
LVYTV 24 K3	Frying Pan Ø24 c/w Wooden Handles, Glass Lid	Enamelled Cast Iron 3 coat, 2 fire Material Thickness: Bottom=5mm. Edges=4mm.	[Ø]24	1,5	3,54	4
LVYTV 28 K3	Frying Pan Ø28 c/w Wooden Handles, Glass Lid	Enamelled Cast Iron 3 coat, 2 fire Material Thickness: Bottom=5mm. Edges=4mm.	[Ø]28	2,5	4,88	4-6





**IN
EVERY
KITCHEN**

LAVA[®]
COOKING



Frying Pans



Color: Black

Frying Pans

Reference	Description	Material / Finishing	Size (cm.)	Capacity (litre)	Product Weights (kg.)	Portion (person)
LVY TV 22 K0	Frying Pan Ø22 c/w Stainless Steel Handle	Enamelled Cast Iron 1coat 1fire Material Thickness: Bottom=4mm. Edges=3mm.	(Ø)22	0,9	1,25	1-2
LVY TV 22 K3	Frying Pan Ø22 c/w Stainless Steel Handle and Glass Lid	Enamelled Cast Iron 1coat 1fire Material Thickness: Bottom=4mm. Edges=3mm.	(Ø)22	0,9	2,10	1-2
LVY TV 26 K0	Frying Pan Ø26 c/w Stainless Steel Handle	Enamelled Cast Iron 1coat 1fire Material Thickness: Bottom=4mm. Edges=3mm.	(Ø)26	1,1	1,80	4
LVY TV 26 K3	Frying Pan Ø26 c/w Stainless Steel Handle and Glass Lid	Enamelled Cast Iron 1coat 1fire Material Thickness: Bottom=4mm. Edges=3mm.	(Ø)26	1,1	2,90	4
LVY TV 30 K0	Frying Pan Ø30 c/w Stainless Steel Handle	Enamelled Cast Iron 1coat 1fire Material Thickness: Bottom=4mm. Edges=3mm.	(Ø)30	1,3	2,40	4-6
LVY TV 30 K3	Frying Pan Ø30 c/w Stainless Steel Handle and Glass Lid	Enamelled Cast Iron 1coat 1fire Material Thickness: Bottom=4mm. Edges=3mm.	(Ø)30	1,3	3,60	4-6

Frying Pans



Red(R)



Orange(O)

Frying Pans

Reference	Description	Material / Finishing	Size (cm.)	Capacity (litre)	Product Weights (kg.)	Portion (person)
LVYSTV30 K0	Frying / Grill Pan Ø30, Integral Metal Handles	Enamelled Cast Iron 3 coat, 2 fire Material Thickness: Bottom=5mm. Edges=4mm.	(Ø)30	2,35	3,20	4-6
LVYSTV30 K3	Frying / Grill Pan Ø30, Integral Metal Handles and Glass Lid	Enamelled Cast Iron 3 coat, 2 fire Material Thickness: Bottom=5mm. Edges=4mm.	(Ø)30	2,35	4,42	4-6



Frying Pans

Eco



Frying Pans - Eco Series

Reference	Description	Material / Finishing	Size (cm.)	Capacity (litre)	Product Weights (kg.)	Portion (person)
LV ECO TV 26 K0	Frying / Grill Pan Ø26, Integral Metal Handles	Enamelled Cast Iron 3 coat, 2 fire Material Thickness: Bottom=5mm. Edges=4mm.	(Ø)26	0,9	2,15	2-4
LV ECO TV 26 K3	Frying / Grill Pan Ø26, Integral Metal Handles and Glass Lid	Enamelled Cast Iron 3 coat, 2 fire Material Thickness: Bottom=5mm. Edges=4mm.	(Ø)26	0,9	3,15	2-4
LV ECO TV 30 K0	Frying / Grill Pan Ø30, Integral Metal Handles	Enamelled Cast Iron 3 coat, 2 fire Material Thickness: Bottom=5mm. Edges=4mm.	(Ø)30	2,35	3,04	4-6
LV ECO TV 30 K3	Frying / Grill Pan Ø30, Integral Metal Handles and Glass Lid	Enamelled Cast Iron 3 coat, 2 fire Material Thickness: Bottom=5mm. Edges=4mm.	(Ø)30	2,35	4,27	4-6

60

Organic Life Friendly®

Frying Pans



Eco



Frying Pans - Eco Series

Reference	Description	Material / Finishing	Size (cm.)	Capacity (litre)	Product Weights (kg.)	Portion (person)
LV ECO P TV 2626 K0	Frying / Grill Pan 26x26 cm. Integral Metal Handles	Enamelled Cast Iron 1coat 1fire Material Thickness: Bottom=5mm. Edges=4mm.	26x26	2,2	2,11	4
LV ECO P TV 2626 K3	Frying / Grill Pan 26x26 cm. Integral Metal Handles and Glass Lid	Enamelled Cast Iron 1coat 1fire Material Thickness: Bottom=5mm. Edges=4mm.	26x26	2,2	3,20	4
LV ECO P TV 2626 K4	Frying / Grill Pan 26x26 cm. Integral Metal Handles and Wooden platter	Enamelled Cast Iron 1coat 1fire Material Thickness: Bottom=5mm. Edges=4mm.	26x26	2,2	3,18	4
LV ECO P TV 2626 K44	Frying / Grill Pan 26x26 cm. Integral Metal Handles, Glass Lid and Wooden Platter	Enamelled Cast Iron 1coat 1fire Material Thickness: Bottom=5mm. Edges=4mm.	26x26	2,2	4,27	4

Grill Pans



Grill Pans



Grill Pans

Reference	Description	Material / Finishing	Size (cm.)	Capacity (litre)	Product Weights (kg.)	Portion (person)
LV P GT 2626 K0	Grill Pan 26x26 Integral w/ Metal Handles	Enamelled Cast Iron 3 coat, 2 fire Material Thickness: Bottom=5mm. Edges=4mm.	26x26	2,2	2,94	4
LV P GT 2626 K3	Grill Pan 26x26 Integral w/ Metal Handles and Glass Lid	Enamelled Cast Iron 3 coat, 2 fire Material Thickness: Bottom=5mm. Edges=4mm.	26x26	2,2	3,32	4
LV P GT 2828 K0	Grill Pan 28x28 Integral w/ Metal Handles	Enamelled Cast Iron 3 coat, 2 fire Material Thickness: Bottom=5mm. Edges=4mm.	28x28	2,6	3,12	4-6
LV P GT 2828 K3	Grill Pan 28x28 Integral w/ Metal Handles and Glass Lid	Enamelled Cast Iron 3 coat, 2 fire Material Thickness: Bottom=5mm. Edges=4mm.	28x28	2,6	4,41	4-6



Grill Pans



Grill Pans



CAST
IRON



Grill Pans

Reference	Description	Material / Finishing	Size (cm.)	Capacity (litre)	Product Weights (kg.)	Portion (person)
LVP GT 2632 K0	Grill Pan 26x32 Integral w/ Metal Handles	Enamelled Cast Iron 3 coat, 2 fire Material Thickness: Bottom=5mm. Edges=4mm.	26x32	2,6	4,28	6

Organic Life Friendly®





IN
EVERY
KITCHEN

LAVA[®]
COOKING



Grill Pans



Grill Pans



Eco



Grill Pans - Eco Series

Reference	Description	Material / Finishing	Size (cm.)	Capacity (litre)	Product Weights (kg.)	Portion (person)
LV ECO GT 2626 T2	Grill Pan 26x26 Integral Metal Handles	Enamelled Cast Iron 1 Coat 1 Fire Material Thickness: Bottom=5mm. Edges=4mm.	26x26	2,2	3,79	4
LV ECO GT 2626 T2 K4	Grill Pan 26x26, Integral Metal Handles and Wooden Service Stand	Enamelled Cast Iron 1 Coat 1 Fire Material Thickness: Bottom=5mm. Edges=4mm.	26x26	2,2	4,37	4

Organic Life Friendly®

69



Grill Pans



Grill Pans



Eco



Grill Pans - Eco Series

Reference	Description	Material / Finishing	Size (cm.)	Capacity (litre)	Product Weights (kg.)	Portion (person)
LV ECO GT 2632 T3	Grill Pan 26x32 Integral Metal Handles	Enamelled Cast Iron 1 Coat 1 Fire Material Thickness: Bottom=5mm. Edges=4mm.	26x32	2,75	4,5	6
LV ECO GT 2632 T3 K4	Grill Pan 26x32, Integral Metal Handles and Wooden Service Stand	Enamelled Cast Iron 1 Coat 1 Fire Material Thickness: Bottom=5mm. Edges=4mm.	26x32	2,75	5,17	6

Organic Life Friendly®



Grill Pans



Grill Pans



Eco



Grill Pans - Eco Series

Reference	Description	Material / Finishing	Size (cm.)	Capacity (litre)	Product Weights (kg.)	Portion (person)
LV ECO GT 2632 T4	Griddle/Grill Duo Pan 26x32 Integral Metal Handles	Enamelled Cast Iron 1 Coat 1 Fire Material Thickness: Bottom=5mm. Edges=4mm.	26x32	2,75	4,32	6
LV ECO GT 2632 T4 K4	Griddle/Grill Duo Pan 26x32, Integral Metal Handles, and Wooden Service Stand	Enamelled Cast Iron 1 Coat 1 Fire Material Thickness: Bottom=5mm. Edges=4mm.	26x32	2,75	4,99	6

Organic Life Friendly®

73

LAVA[®]

**CAST IRON
OUTDOOR**

RUSTPROOF



High Quality Enamel Cover

- Healthy
- Durable
- Easy to clean

Grill Pans



Grill Pans



CAST
IRON



Red(R)



Orange(O)

Grill Pans

Reference	Description	Material / Finishing	Size (cm.)	Capacity (litre)	Product Weights (kg.)	Portion (person)
LVY GT 30 K0	Grill Pan Ø30, Integral Metal Handles	Enamelled Cast Iron 3 coat, 2 fire Material Thickness: Bottom=5mm. Edges=4mm.	(Ø)30	2,35	3,55	4-6
LVY GT 30 K3	Grill Pan Ø30, Integral Metal Handles and Glass Lid	Enamelled Cast Iron 3 coat, 2 fire Material Thickness: Bottom=5mm. Edges=4mm.	(Ø)30	2,35	4,70	4-6

Organic Life Friendly®

75



Grill Pans



Grill Pans



Eco



Grill Pans - Series

Reference	Description	Material / Finishing	Size (cm.)	Capacity (litre)	Product Weights (kg.)	Portion (person)
LV ECO GT 26 T5	Grill Pan Ø26 Integral Metal Handles	Enamelled Cast Iron 1coat 1fire Material Thickness: Bottom=5mm. Edges=4mm.	(Ø)26	0,8	2,30	2-4
LV ECO GT 26 T5 K3	Grill Pan Ø26 Integral Metal Handles and Glass Lid	Enamelled Cast Iron 1coat 1fire Material Thickness: Bottom=5mm. Edges=4mm.	(Ø)26	0,8	3,40	2-4
LV ECO GT 30 T5	Grill Pan Ø30 Integral Metal Handles	Enamelled Cast Iron 1coat 1fire Material Thickness: Bottom=5mm. Edges=4mm.	(Ø)30	2,35	3,55	4-6
LV ECO GT 30 T5 K3	Grill Pan Ø30, Integral Metal Handles and Glass Lid	Enamelled Cast Iron 1coat 1fire Material Thickness: Bottom=5mm. Edges=4mm.	(Ø)30	2,35	4,50	4-6

Organic Life Friendly®

77



**Easy to Make
Barbeque**
Have a Good
Time...

Grill Pans



Grill Pans



Eco



Grill Pans - Eco Series

Reference	Description	Material / Finishing	Size (cm.)	Capacity (litre)	Product Weights (kg.)	Portion (person)
LV ECO GT 3142	Grill Plate/Dish, 31x42cm. Integral With Metal Handles	Enamelled Cast Iron 1coat 1fire Material Thickness: Bottom=5mm. Edges=4mm.	31x42	4,5	5,46	8
LV ECO GT 3142 K4	Grill Plate/Dish, 31x42cm. Integral With Metal Handles and Wooden Stand	Enamelled Cast Iron 1coat 1fire Material Thickness: Bottom=5mm. Edges=4mm.	31x42	4,5	5,94	8

Organic Life Friendly®

79



Grill Pans



Grill Pans



Eco



Grill Pans - Eco Series

Reference	Description	Material / Finishing	Size (cm.)	Capacity (litre)	Product Weights (kg.)	Portion (person)
LV ECO P GT 2626 K0	Grill Pan 26x26 cm. Integral Metal Handles	Enamelled Cast Iron 1coat 1fire Material Thickness: Bottom=5mm. Edges=4mm.	26x26	2,2	2,23	4
LV ECO P GT 2626 K3	Grill Pan 26x26 cm. Integral Metal Handles and Glass Lid	Enamelled Cast Iron 1coat 1fire Material Thickness: Bottom=5mm. Edges=4mm.	26x26	2,2	3,33	4
LV ECO P GT 2626 K4	Grill Pan 26x26 cm. Integral Metal Handles and Wooden Platter	Enamelled Cast Iron 1coat 1fire Material Thickness: Bottom=5mm. Edges=4mm.	26x26	2,2	3,30	4
LV ECO P GT 2626 K44	Grill Pan 26x26 cm. Integral Metal Handles, Glass Lid and Wooden Platter	Enamelled Cast Iron 1coat 1fire Material Thickness: Bottom=5mm. Edges=4mm.	26x26	2,2	4,39	4



Grill Pans



Grill Pans



Color: Black

Grill Pans

Reference	Description	Material / Finishing	Size (cm.)	Capacity (litre)	Product Weights (kg.)	Portion (person)
LVY GT 22 K0	Grill Pan Ø22 c/w Stainless Steel Handle	Enamelled Cast Iron 1coat 1fire Material Thickness: Bottom=4mm. Edges=3mm.	(Ø)22	0,8	1,40	1-2
LVY GT 22 K3	Grill Pan Ø22 c/w Stainless Steel Handle and Glass Lid	Enamelled Cast Iron 1coat 1fire Material Thickness: Bottom=4mm. Edges=3mm.	(Ø)22	0,8	2,25	1-2
LVY GT 26 K0	Grill Pan Ø26 c/w Stainless Steel Handle	Enamelled Cast Iron 1coat 1fire Material Thickness: Bottom=4mm. Edges=3mm.	(Ø)26	1	1,95	4
LVY GT 26 K3	Grill Pan Ø26 c/w Stainless Steel Handle and Glass Lid	Enamelled Cast Iron 1coat 1fire Material Thickness: Bottom=4mm. Edges=3mm.	(Ø)26	1	3,10	4
LVY GT 30 K0	Grill Pan Ø30 c/w Stainless Steel Handle	Enamelled Cast Iron 1coat 1fire Material Thickness: Bottom=4mm. Edges=3mm.	(Ø)30	1,2	2,55	4-6
LVY GT 30 K3	Grill Pan Ø30 c/w Stainless Steel Handle and Glass Lid	Enamelled Cast Iron 1coat 1fire Material Thickness: Bottom=4mm. Edges=3mm.	(Ø)30	1,2	3,75	4-6



Grill Pans

Eco



CAST
IRON



Grill Pans - Eco Series

Reference	Description	Material / Finishing	Size (cm.)	Capacity (litre)	Product Weights (kg.)	Portion (person)
LV ECO GT 2424 T15	Grill Pan 24x24cm. with Wire Handle	Enamelled Cast Iron 1 Coat 1 Fire Material Thickness: Bottom=4mm, Edges=3mm.	24x24	-	1,8	1-2
LV ECO GT 2424 T15 K4	Grill Pan 24x24cm. with Wire Handle and Wooden Platter	Enamelled Cast Iron 1 Coat 1 Fire Material Thickness: Bottom=4mm, Edges=3mm.	24x24	-	2,6	1-2

84

Organic Life Friendly®

Grill Pans



Eco



Grill Pans - Eco Series

Reference	Description	Material / Finishing	Size (cm.)	Capacity (litre)	Product Weights (kg.)	Portion (person)
LV ECO GT 2130 T16	Grill Pan 21x30cm. with Wire Handle	Enamelled Cast Iron 1 Coat 1 Fire Material Thickness: Bottom=4mm. Edges=3mm.	21x30	-	1,9	2-3
LV ECO GT 2130 T16 K4	Grill Pan 21x30cm. with Wire Handle and Wooden Platter	Enamelled Cast Iron 1 Coat 1 Fire Material Thickness: Bottom=4mm. Edges=3mm.	21x30	-	2,8	2-3

Organic Life Friendly®

85



Grill Pans

Eco



Grill Pans - Eco Series

Reference	Description	Material / Finishing	Size (cm.)	Capacity (litre)	Product Weights (kg.)	Portion (person)
LV ECO GT 2136 T17	Grill Pan 21x36cm. with Wire Handle	Enamelled Cast Iron 1 Coat 1 Fire Material Thickness: Bottom=4mm. Edges=3mm.	21x36	-	2,36	2-4
LV ECO GT 2136 T17 K4	Grill Pan 21x36cm. with Wire Handle and Wooden Platter	Enamelled Cast Iron 1 Coat 1 Fire Material Thickness: Bottom=4mm. Edges=3mm.	21x36	-	3,36	2-4

86

Organic Life Friendly®

Grill Pans

Eco



Grill Pans - Eco Series

Reference	Description	Material / Finishing	Size (cm.)	Capacity (litre)	Product Weights (kg.)	Portion (person)
LV ECO GT 25 T18	Grill Pan Dia.25cm. with Wire Handle	Enamelled Cast Iron 1 Coat 1 Fire Material Thickness: Bottom=4mm. Edges=3mm.	(Ø)25	-	1,65	2-3
LV ECO GT 25 T18 K4	Grill Pan Dia.25cm. with Wire Handle and Wooden Platter	Enamelled Cast Iron 1 Coat 1 Fire Material Thickness: Bottom=4mm. Edges=3mm.	(Ø)25	-	2,2	2-3

Organic Life Friendly®

87



Grill Pans



Grill Pans



Eco

Front Side: Grill Shape



Rear Side: Smooth Surface

Griddle - Eco Series

Reference	Description	Material / Finishing	Size (cm.)	Capacity (litre)	Product Weights (kg.)	Portion (person)
LV ECO GT 2647 T6	Griddle/Grill Plate, Dual Side Reversible, 26x47, Integral Metal Handles	Enamelled Cast Iron 1 Coat 1 Fire Material Thickness: 6mm. Edges=12mm.	w=47 d=26 h=1,2	-	5,87	6-8

Organic Life Friendly®

89



Grill Pans

Grill Pans



Eco



Application

Grill Pres - Eco Series

Reference	Description	Material / Finishing	Size (cm.)	Capacity (litre)	Product Weights (kg.)	Portion (person)
LV ECO P PRS 2121	Grill Pres, Square 21x21cm.	Enamelled Cast Iron 1 Coat 1 Fire	w=21 d=25	-	1,5	-

Organic Life Friendly®



Mini Grill Pans



Mini Grill Pans

Eco



CAST
IRON



Mini Grill Pans - Eco Series

Reference	Description	Material / Finishing	Size (cm.)	Capacity (litre)	Product Weights (kg.)	Portion (person)
LV ECO P GT 1616	Mini Grill Skillet, Square, 16x16cm.	Enamelled Cast Iron 1 Coat 1 Fire Material Thickness: Bottom=5mm. Edges=4mm.	w=16 h=2.5 d=16	0,5	1,16	1
LV ECO P GT 1616 K4	Mini Grill Skillet, Square, 16x16cm. and Wooden Platter	Enamelled Cast Iron 1 Coat 1 Fire Material Thickness: Bottom=5mm. Edges=4mm.	w=16 h=2.5 d=16	0,5	1,64	1
LV ECO P GT 1616 K44	Mini Grill Skillet, Square, 16x16cm. and Wooden Platter For Service	Enamelled Cast Iron 1 Coat 1 Fire Material Thickness: Bottom=5mm. Edges=4mm.	w=16 h=2.5 d=16	0,5	2,6	1

Organic Life Friendly®

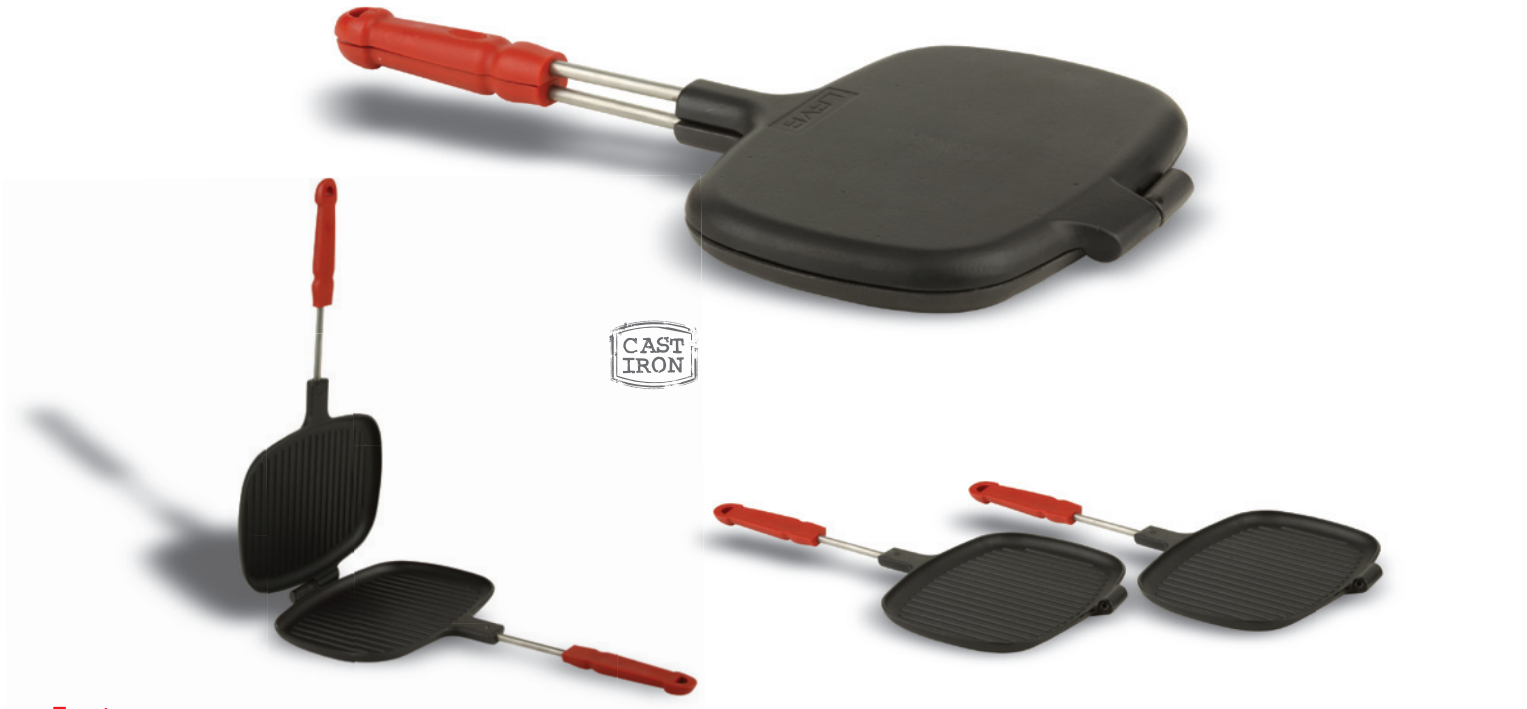
93



Toaster



Toaster



Toaster

Reference

Description

Material / Finishing

Size (cm.)

Capacity (litre)

Product
Weights (kg.)

Portion (person)

LV TST 1826

Toaster, 18x26 cm.

Enamelled Cast Iron 1coat 1fire
Material Thickness: Bottom=4mm. Edges=3mm.

18x26

-

3

1-2

Organic Life Friendly®

95



“LAVA COOKING provides the ultimate cooking experience on all heat sources from wood burners to designer stoves.”



IN
EVERY
KITCHEN

LAVA[®]
COOKING



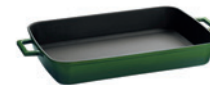
Dishes - Roaster



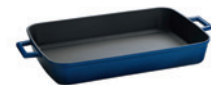
Dishes - Roaster



Red (R)



Green (G)



Blue (B)



Black (BL)



Purple (P)



Orange (O)

Dish 22x30

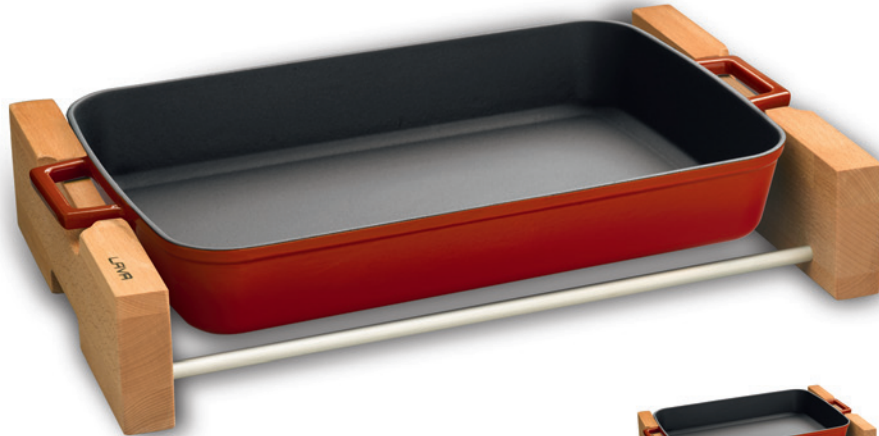
Reference	Description	Material / Finishing	Size (cm.)	Capacity (litre)	Product Weights (kg.)	Portion (person)
LVP TP 2230 K0	Rectangular Dish 22x30cm.	Enamelled Cast Iron 3 coat, 2 fire Material Thickness: Bottom=5mm. Edges=4mm.	22x30	2,65	3,1	6-8



Dishes - Roaster



Dishes - Roaster



Red (R)



Green (G)



Blue (B)



Black (BL)



Purple (P)



Orange (O)

Dish 22x30 and Wooden Stand

Reference	Description	Material / Finishing	Size (cm.)	Capacity (litre)	Product Weights (kg.)	Portion (person)
LVP TP 2230 K4	Rectangular Dish 22x30cm. and Wooden Service Stand	Enamelled Cast Iron 3 coat, 2 fire Material Thickness: Bottom=5mm. Edges=4mm.	22x30	2,65	3,9	6-8



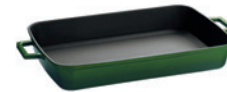
Dishes - Roaster



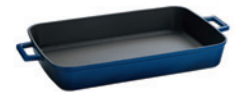
Dishes - Roaster



Red (R)



Green (G)



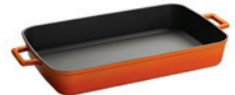
Blue (B)



Black (BL)



Purple (P)



Orange (O)

Dish 26x40

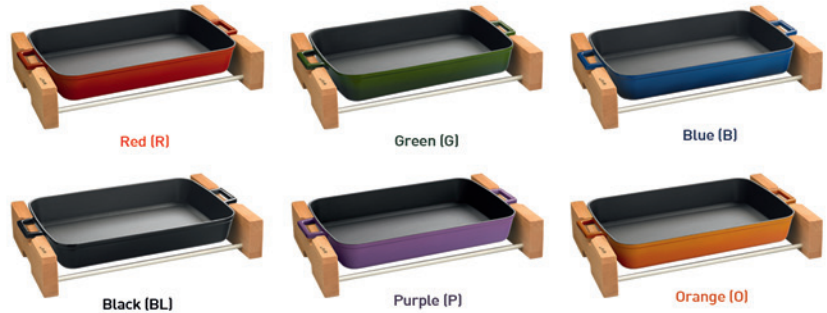
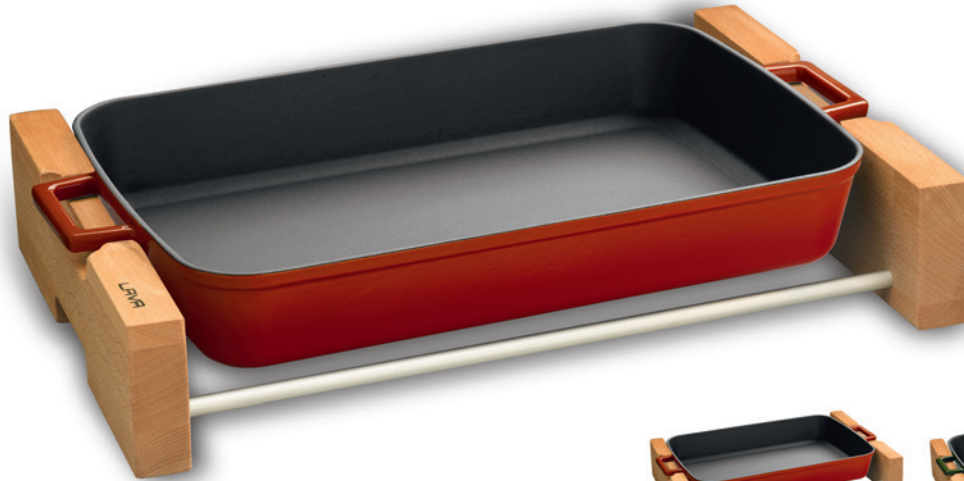
Reference	Description	Material / Finishing	Size (cm.)	Capacity (litre)	Product Weights (kg.)	Portion (person)
LVP TP 2640 K0	Rectangular Dish 26x40cm.	Enamelled Cast Iron 3 coat, 2 fire Material Thickness: Bottom=5mm. Edges=4mm.	26x40	5	5	8-12



Dishes - Roaster



Dishes - Roaster



Dish 26x40 and Wooden Stand

Reference	Description	Material / Finishing	Size (cm.)	Capacity (litre)	Product Weights (kg.)	Portion (person)
LVP TP 2640 K4	Rectangular Dish 26x40cm. and Wooden Service Stand	Enamelled Cast Iron 3 coat, 2 fire Material Thickness: Bottom=5mm. Edges=4mm.	26x40	5	6,07	8-12



Dishes - Roaster



Dishes - Roaster



Eco



Dish 21x33

Reference	Description	Material / Finishing	Size (cm.)	Capacity (litre)	Product Weights (kg.)	Portion (person)
LV P TP 2133 K0	Rectangular Dish 21x33 cm.	Enamelled Cast Iron 1coat 1fire Material Thickness: Bottom=4mm. Edges=3mm.	21x33	2,3	2,80	2-4

Organic Life Friendly®

107



Wooden Platter and Silicon Handles



Wooden Platter



Wood



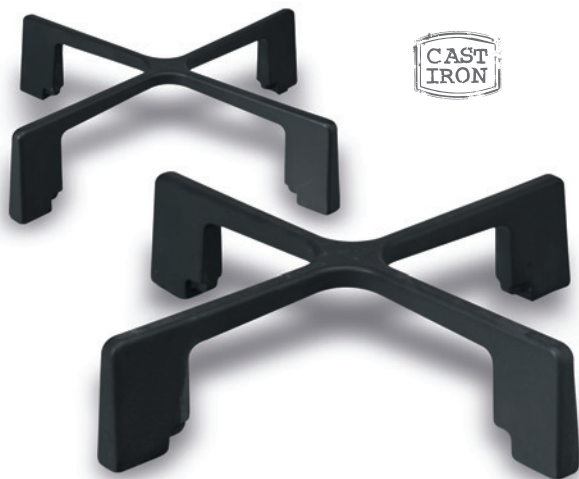
Wooden Platter with Magnet

Reference	Description	Material / Finishing	Size (cm.)	Capacity (litre)	Product Weights (kg.)	Portion (person)
LV AS 105	Wooden Platter with Magnetic Feature, Dia.(Ø)16cm.	Wooden / Natural Color	[Ø]16	-	0,18	-
LV AS 106	Wooden Platter with Magnetic Feature, Dia.(Ø)20cm.	Wooden / Natural Color	[Ø]20	-	0,275	-
LV AS 107	Wooden Platter with Magnetic Feature, Dia.(Ø)24cm.	Wooden / Natural Color	[Ø]24	-	0,4	-
LV AS 108	Wooden Platter with Magnetic Feature, Dia.(Ø)28cm.	Wooden / Natural Color	[Ø]28	-	0,54	-



Cast Iron Platter

Cast Iron



Platter - Cast Iron

Reference	Description	Material / Finishing	Size (cm.)	Capacity (litre)	Product Weights (kg.)	Portion (person)
LV 10 0015	Platter - Cast Iron Dia.(Ø)20cm.	Enamelled Cast Iron 1 Coat 1 Fire	[Ø]20	-	0,44	-
LV 10 0022	Platter - Cast Iron Dia.(Ø)24cm.	Enamelled Cast Iron 1 Coat 1 Fire	[Ø]24	-	0,54	-

Silicon Handles



Silicon



Application

Silicon Handle

Reference	Description	Material / Finishing
-----------	-------------	----------------------

LVST 101	Silicon Handle (1 Set=2ea.)	Silicon
----------	--------------------------------	---------



“Cast iron insulates, ensuring optimal heat distribution while making sure the ingredients don’t stick to the pan. This produces dishes cooked to perfection every time.”



IN
EVERY
KITCHEN

LAVA[®]
COOKING



Barbeque





Barbeque



Red(R)



Orange(O)



LV MNG IZG 3645
4,02 kg.



LV MNG GVD
7,3 kg.



LV MNG STND
2 kg.

Barbeque

Reference	Description	Material / Finishing	Size (cm.)	Capacity (litre)	Product Weights (kg.)	Portion (person)
LV MNG 3645	Barbeque, 36x45cm. Bottom holder, Main Body, Wiremesh and upper barbeque grill are included	Enamelled Cast Iron 3 coat, 2 fire	45 x 36 x 18	-	13,75	4-6

RUSTPROOF
Healty, Durable

Compatible for all type of barbeques



Barbeque Grill



Barbeque Grill



Barbeque Grill

Reference	Description	Material / Finishing	Size (cm.)	Capacity (litre)	Product Weights (kg.)	Portion (person)
LV MNG IZG 3645	Barbeque grill w=45 x d=36cm. Complete With Silicon Handles	Enamelled Cast Iron 1 coat 1 fire	36 x 45	-	4,02	4-6





**IN
EVERY
KITCHEN**

LAVA[®]
COOKING



Round Dish



Service Dishes



Service Dishes (Ø) 21 cm.

Reference	Description	Material / Finishing	Size (cm.)	Capacity (litre)	Product Weights (kg.)	Portion (person)
LVYTB 21	Round Dish, Dia.(Ø) 21 cm.	Enamelled Cast Iron 1coat 1fire Material Thickness: Bottom=4mm. Edges=3mm.	(Ø) 21	-	1	1
LVYTB 21 K4	Round Dish, Dia.(Ø)21 cm. w/ Wooden Platter	Enamelled Cast Iron 1coat 1fire Material Thickness: Bottom=4mm. Edges=3mm.	(Ø) 21	-	1,76	1
LVYTB 21 K44	Round Dish, Dia.(Ø)21 cm. w/ Wooden Service Platter	Enamelled Cast Iron 1coat 1fire Material Thickness: Bottom=4mm. Edges=3mm.	(Ø) 21	-	2,98	1



Round Dish



Service Dishes



CAST
IRON



Service Dishes (Ø) 25 cm.

Reference	Description	Material / Finishing	Size (cm.)	Capacity (litre)	Product Weights (kg.)	Portion (person)
LVY TB 25	Round Dish, Dia. (Ø)25 cm.	Enamelled Cast Iron 1coat 1fire Material Thickness: Bottom=4mm. Edges=3mm.	(Ø) 25	-	1,34	1-2
LVY TB 25 K4	Round Dish, Dia. (Ø)25 cm. w/ Wooden Platter	Enamelled Cast Iron 1coat 1fire Material Thickness: Bottom=4mm. Edges=3mm.	(Ø) 25	-	2,45	1-2
LVY TB 25 K44	Round Dish, Dia. (Ø)25 cm. w/ Wooden Service Platter	Enamelled Cast Iron 1coat 1fire Material Thickness: Bottom=4mm. Edges=3mm.	(Ø) 25	-	3,26	1-2



Round Bowl



Round Bowl



Round Bowl

Reference	Description	Material / Finishing	Size (cm.)	Capacity (litre)	Product Weights (kg.)	Portion (person)
LVYCK 14	Round Bowl, Dia.[Ø]14 cm.	Enamelled Cast Iron 1coat 1fire Material Thickness: Bottom=4mm. Edges=3mm.	[Ø] 14	0,25	0,60	1
LVYCK 14 K4	Round Bowl, Dia.[Ø]14 cm. w/ Wooden Service Platter	Enamelled Cast Iron 1coat 1fire Material Thickness: Bottom=4mm. Edges=3mm.	[Ø] 14	0,25	1,16	1
LVYCK 14 K44	Round Bowl, Dia.[Ø]14 cm. w/ Wooden Service Platter	Enamelled Cast Iron 1coat 1fire Material Thickness: Bottom=4mm. Edges=3mm.	[Ø] 14	0,25	1,30	1



Mini Hot Pot



Mini Hot Pot



Eco



Mini Hot Pot

Reference	Description	Material / Finishing	Size (cm.)	Capacity (litre)	Product Weights (kg.)	Portion (person)
LV ECO GV 11	Hot pot, Round, Dia.(Ø)11cm. h=4cm.	Enamelled Cast Iron 1coat 1fire Material Thickness: Bottom=4mm. Edges=3mm.	(Ø) 11	0,21	0,47	1
LV ECO GV 11 K4	Hot pot, Round, Dia.(Ø)11cm. h=4cm. w/ Wooden Platter	Enamelled Cast Iron 1coat 1fire Material Thickness: Bottom=4mm. Edges=3mm.	(Ø) 11	0,21	0,65	1
LV ECO GV 14	Hot pot, Round, Dia.(Ø)14cm. h=4cm.	Enamelled Cast Iron 1coat 1fire Material Thickness: Bottom=4mm. Edges=3mm.	(Ø) 14	0,32	0,80	1
LV ECO GV 14 K4	Hot pot, Round, Dia.(Ø)14cm. h=4cm. w/ Wooden Platter	Enamelled Cast Iron 1coat 1fire Material Thickness: Bottom=4mm. Edges=3mm.	(Ø) 14	0,32	1	1
LV ECO GV 17	Hot pot, Round, Dia.(Ø)17cm. h=4cm.	Enamelled Cast Iron 1coat 1fire Material Thickness: Bottom=4mm. Edges=3mm.	(Ø) 17	0,59	1,14	1-2
LV ECO GV 17 K4	Hot pot, Round, Dia.(Ø)17cm. h=4cm. w/ Wooden Platter	Enamelled Cast Iron 1coat 1fire Material Thickness: Bottom=4mm. Edges=3mm.	(Ø) 17	0,59	1,46	1-2



Service Dishes



Service Dishes



Eco



Service Dish

Reference	Description	Material / Finishing	Size (cm.)	Capacity (litre)	Product Weights (kg.)	Portion (person)
LV ECO ST 3015	Service Dish, Rectangular, 30x15cm. Color: Black	Enamelled Cast Iron 1coat 1fire Material Thickness: Bottom=4mm. Edges=3mm.	30x15	-	1,44	1-2
LV ECO ST 3015 K4	Service Dish, Rectangular, 30x15cm. w/ Wooden Platter, Color: Black	Enamelled Cast Iron 1coat 1fire Material Thickness: Bottom=4mm. Edges=3mm.	30x15	-	2,36	1-2

Organic Life Friendly®



Service Dishes



Service Dishes



Eco



Service Dish

Reference	Description	Material / Finishing	Size (cm.)	Capacity (litre)	Product Weights (kg.)	Portion (person)
LV ECO ST 3624	Service Dish, Rectangular, 36x24cm. Color: Black	Enamelled Cast Iron 1coat 1fire Material Thickness: Bottom=4mm. Edges=3mm.	36x24	-	2,91	4-6
LV ECO ST 3624 K4	Service Dish, Rectangular, 36x24cm. w/ Wooden Platter, Color: Black	Enamelled Cast Iron 1coat 1fire Material Thickness: Bottom=4mm. Edges=3mm.	36x24	-	4,53	4-6



Service Dishes



Service Dishes



Eco



Service Dish

Reference	Description	Material / Finishing	Size (cm.)	Capacity (litre)	Product Weights (kg.)	Portion (person)
LV ECO ST 3220	Service Dish, Rectangular, 32x20cm. Color:Black	Enamelled Cast Iron 1coat 1fire Material Thickness: Bottom=4mm. Edges=3mm.	32x20	-	2,24	1-2
LV ECO ST 3220 K4	Service Dish, Rectangular, 32x20cm. w/ Wooden Platter, Color: Black	Enamelled Cast Iron 1coat 1fire Material Thickness: Bottom=4mm. Edges=3mm.	32x20	-	3,24	1-2

Organic Life Friendly®



Service Dishes



Service Dishes



Eco



Round Dish

Reference	Description	Material / Finishing	Size (cm.)	Capacity (litre)	Product Weights (kg.)	Portion (person)
LV ECO 0 TV 1832	Service Dish, Oval, w=32 x d=18 cm. Color: Black	Enamelled Cast Iron 1coat 1fire Material Thickness: Bottom=4mm. Edges=3mm.	32x18	0,9	1,90	1-2
LV ECO 0 TV 1832 K4	Service Dish, Oval, w=32x18cm. w/ Wooden Platter; Color: Black	Enamelled Cast Iron 1coat 1fire Material Thickness: Bottom=4mm. Edges=3mm.	32x18	0,9	2,70	1-2



Service Dishes



Service Dishes



Eco



Service Dish

Reference	Description	Material / Finishing	Size (cm.)	Capacity (litre)	Product Weights (kg.)	Portion (person)
LV ST 3015	Service Dish, Rectangular, 30x15cm. Color: Cream	Enamelled Cast Iron 3coat 2fire Color: Cream Material Thickness: Bottom=4mm. Edges=3mm.	30x15	-	1,44	1-2
LV ST 3015 K4	Service Dish, Rectangular, 30x15cm. w/ Wooden Platter, Color: Cream	Enamelled Cast Iron 3coat 2fire Color: Cream Material Thickness: Bottom=4mm. Edges=3mm.	30x15	-	2,36	1-2

Organic Life Friendly®



Service Dishes



Service Dishes



Eco



Service Dish

Reference	Description	Material / Finishing	Size (cm.)	Capacity (litre)	Product Weights (kg.)	Portion (person)
LV ST 3624	Service Dish, Rectangular, 36x24cm.Color: Cream	Enamelled Cast Iron 3coat 2fire Color: Cream Material Thickness: Bottom=4mm. Edges=3mm.	36x24	-	2,91	4-6
LV ST 3624 K4	Service Dish, Rectangular, 36x24cm. w/ Wooden Platter, Color: Cream	Enamelled Cast Iron 3coat 2fire Color: Cream Material Thickness: Bottom=4mm. Edges=3mm.	36x24	-	4,53	4-6

Organic Life Friendly®



Service Dishes



Service Dishes



Eco



Service Dish

Reference	Description	Material / Finishing	Size (cm.)	Capacity (litre)	Product Weights (kg.)	Portion (person)
LV ST 3220	Service Dish, Rectangular, 32x20cm Color: Cream	Enamelled Cast Iron 3coat 2fire Color: Cream Material Thickness: Bottom=4mm. Edges=3mm.	32x20	-	2,24	1-2
LV ST 3220 K4	Service Dish, Rectangular, 32x20cm. w/ Wooden Platter, Color: Cream	Enamelled Cast Iron 3coat 2fire Color: Cream Material Thickness: Bottom=4mm. Edges=3mm.	32x20	-	3,24	1-2



Gastronorm Dishes



Gastronorm Dishes



Eco



Red (R)



Green (G)



Orange (O)



Blue (B)



Purple (P)



Black (BL)

Gastronorm Dish

Reference	Description	Material / Finishing	Size (cm.)	Capacity (litre)	Product Weights (kg.)	Portion (person)
LV KV 3326	GN 1/2 Gastronorm Dish, 26x33cm. h=6.5cm. Color: Cream	Enamelled Cast Iron 3coat 2fire Color: Cream Material Thickness: Bottom=4.5mm. Edges=3.5mm.	26x33x6,5	3	3,87	-
LV KV 3326 COLOR	GN 1/2 Gastronorm Dish, 26x33cm. h=6.5cm. Inner Color: Cream, Outer Color: Blue, Red, Orange, Purple, Black, Green	Enamelled Cast Iron 3coat 2fire Color: Cream Material Thickness: Bottom=4,5mm. Edges=3,5mm.	26x33x6,5	3	3,87	-



Fish Plate



Fish Plate



Eco



Fish Plate - Eco Series

Reference	Description	Material / Finishing	Size (cm.)	Capacity (litre)	Product Weights (kg.)	Portion (person)
LV ECO BT 1524 T8	Fish Plate, 15x24cm. Fish Shaped, Integral Metal Gandles	Enamelled Cast Iron 1 Coat 1 Fire Material Thickness: Bottom=5mm. Edges=4mm.	15x24	0,52	1,25	1-2
LV ECO BT 1524 T8 K4	Fish Plate and Wooden Platter, 15x24cm. Fish Shaped, Integral Metal Handles	Enamelled Cast Iron 1 Coat 1 Fire Material Thickness: Bottom=5mm. Edges=4mm.	15x24	0,52	1,81	1-2

Organic Life Friendly®

145



Fish Plate



Fish Plate



Eco



Fish Plate - Eco Series

Reference	Description	Material / Finishing	Size (cm.)	Capacity (litre)	Product Weights (kg.)	Portion (person)
LV ECO BT 1529 T9	Fish Plate, 15.5x29.5cm. Integral Metal Handles	Enamelled Cast Iron 1 Coat 1 Fire Material Thickness: Bottom=5mm. Edges=4mm.	15,5x29,5	0,55	1,26	1-2
LV ECO BT 1529 T9 K4	Fish Plate and Wooden Platter, 15.5x29.5cm. Integral Metal Handles	Enamelled Cast Iron 1 Coat 1 Fire Material Thickness: Bottom=5mm. Edges=4mm.	15,5x29,5	0,55	1,98	1-2

Organic Life Friendly®

147



Pizza-Krep-Pancake Plate



Pizza-Krep-Pancake Plate



Eco



Pizza / Krep / Pancake Plates - Eco Series

Reference	Description	Material / Finishing	Size (cm.)	Capacity (litre)	Product Weights (kg.)	Portion (person)
LV ECO Y PZ 20	Pizza / Krep / Pancake Pan, Round, Dia.(Ø)20cm.	Enamelled Cast Iron 1 Coat 1 Fire Material Thickness: Bottom=5mm. Edges=4mm.	(Ø)20	0,37	1,23	1
LV ECO Y PZ 20 K4	Pizza / Krep / Pancake Pan,Round, Dia.(Ø)20cm. and Wooden Platter	Enamelled Cast Iron 1 Coat 1 Fire Material Thickness: Bottom=5mm. Edges=4mm.	(Ø)20	0,37	1,99	1

Organic Life Friendly®

149



Pizza-Krep-Pancake Plate



Pizza-Krep-Pancake Plate



Eco



CAST
IRON



Pizza / Krep / Pancake Plates - Eco Series

Reference	Description	Material / Finishing	Size (cm.)	Capacity (litre)	Product Weights (kg.)	Portion (person)
LV ECO Y PZ 28	Pizza / Krep / Pancake Pan, Round, Dia.(Ø)28cm.	Enamelled Cast Iron 1 Coat 1 Fire Material Thickness: Bottom=5mm. Edges=4mm.	(Ø)28	0,73	2,05	1
LV ECO Y PZ 28 K4	Pizza / Krep / Pancake Pan,Round, Dia.(Ø)28cm. and Wooden Platter	Enamelled Cast Iron 1 Coat 1 Fire Material Thickness: Bottom=5mm. Edges=4mm.	(Ø)28	0,73	3,35	1

Organic Life Friendly®

151



Turkish Wok





Turkish Wok

Eco



Turkish Wok - Eco Series

Reference	Description	Material / Finishing	Size (cm.)	Capacity (litre)	Product Weights (kg.)	Portion (person)
LV ECO SK 20 T7	Turkish Wok, Round, Ø20	Enamelled Cast Iron 1 Coat 1 Fire Material Thickness: Bottom=5mm. Edges=4mm.	Ø20	0,5	1,15	1
LV ECO SK 20 T7 K4	Turkish Wok and Wooden Platter, Round, Ø20	Enamelled Cast Iron 1 Coat 1 Fire Material Thickness: Bottom=5mm. Edges=4mm.	Ø20	0,5	1,55	1

Turkish Wok



Eco



Turkish Wok - Eco Series

Reference	Description	Material / Finishing	Size (cm.)	Capacity (litre)	Product Weights (kg.)	Portion (person)
LV ECO SK 20 T7 K44	Turkish Wok and Wooden Service Platter, Round, Ø20	Enamelled Cast Iron 1 Coat 1 Fire Material Thickness: Bottom=5mm. Edges=4mm.	Ø20	0,5	2,2	1
LV ECO SK 20 T7 K3	Turkish Wok with Wooden Platter and Glass Lid, Round, Ø20	Enamelled Cast Iron 1 Coat 1 Fire Material Thickness: Bottom=5mm. Edges=4mm.	Ø20	0,5	1,95	1

[Source cups are not included.]

Organic Life Friendly®

155



Turkish Wok



Turkish Wok



Eco



Turkish Wok - Eco Series

Reference	Description	Material / Finishing	Size (cm.)	Capacity (litre)	Product Weights (kg.)	Portion (person)
LV ECO SK 28 T7	Turkish Wok, Round, Ø28	Enamelled Cast Iron 1 Coat 1 Fire Material Thickness: Bottom=5mm. Edges=4mm.	Ø)28	1,6	2,25	4
LV ECO SK 28 T7 K4	Turkish Wok and Wooden Platter, Round, Ø28	Enamelled Cast Iron 1 Coat 1 Fire Material Thickness: Bottom=5mm. Edges=4mm.	Ø)28	1,6	3,07	4
LV ECO SK 28 T7 K3	Turkish Wok with Wooden Platter and Glass Lid, Round, Ø28	Enamelled Cast Iron 1 Coat 1 Fire Material Thickness: Bottom=5mm. Edges=4mm.	Ø)28	1,6	3,47	4

Organic Life Friendly®

157



Hot Plate



Hot Plate



Eco



Hot Plate - Eco Series

Reference	Description	Material / Finishing	Size (cm.)	Capacity (litre)	Product Weights (kg.)	Portion (person)
LV ECO HP 1219 T13	Hot Plate, 12,5x19cm. Oval, Serie:Eco	Enamelled Cast Iron 1 Coat 1 Fire Material Thickness: Bottom=5mm. Edges=4mm.	12,5x19	0,28	1,17	1
LV ECO HP 1219 T13 K4	Hot Plate and Wooden Platter 12,5x19cm. Oval, Serie:Eco	Enamelled Cast Iron 1 Coat 1 Fire Material Thickness: Bottom=5mm. Edges=4mm.	12,5x19	0,28	1,67	1
LV ECO HP 2619 T13	Hot Plate, 26x19cm. Oval, Serie:Eco	Enamelled Cast Iron 1 Coat 1 Fire Material Thickness: Bottom=5mm. Edges=4mm.	26x19	0,4	1,50	1
LV ECO HP 2619 T13 K4	Hot Plate and Wooden Platter 26x19cm. Oval, Serie:Eco	Enamelled Cast Iron 1 Coat 1 Fire Material Thickness: Bottom=5mm. Edges=4mm.	26x19	0,4	2,25	1

Organic Life Friendly®



Hot Plate



Hot Plate



Eco

Front Side: Grill Shape



Rear Side: Smooth Surface



Hot Plate - Eco Series

Reference	Description	Material / Finishing	Size (cm.)	Capacity (litre)	Product Weights (kg.)	Portion (person)
LV ECO HP2215 T13	Hot Plate, Rectangular 22X15cm.	Enamelled Cast Iron 1 Coat 1 Fire Material Thickness: 6mm. Edges=12mm.	w=22 d=15 h=1,2	-	2,24	1-2

Organic Life Friendly®

161



Hot Plate

Eco

Front Side: Grill Shape



CAST
IRON

Rear Side: Smooth Surface



Hot Plate - Eco Series

Reference	Description	Material / Finishing	Size (cm.)	Capacity (litre)	Product Weights (kg.)	Portion (person)
LV ECO HP2215 T13 K4	Hot Plate and Wooden Service Platter, Rectangular, 22X15cm.	Enamelled Cast Iron 1 Coat 1 Fire Material Thickness: 6mm. Edges=12mm.	w=22 d=15 h=1,2	-	3,54	1-2

Hotplate



Eco

Front Side: Grill Shape



Rear Side: Smooth Surface



Hotplate - Eco Series

Reference	Description	Material / Finishing	Size (cm.)	Capacity (litre)	Product Weights (kg.)	Portion (person)
LV ECO HP2215T13 K4 - 2	Hot Plate and Wooden Service Platter, Rectangular, 22x15cm. (sauce cups are not included)	Enamelled Cast Iron 1coat 1fire Material Thickness:6mm. Edges=12mm.	22x15x1,2	-	3,28	1-2

Organic Life Friendly®

163



Hot Plate



Hot Plate



Eco

CAST
IRON

Front Side: Grill Shape



Rear Side: Smooth Surface



Hot Plate - Eco Series

Reference	Description	Material / Finishing	Size (cm.)	Capacity (litre)	Product Weights (kg.)	Portion (person)
LV ECO HP2215 T13 K44	Hot Plate ve and Wooden Service Stand, Rectangular, 22X15cm.	Enamelled Cast Iron 1 Coat 1 Fire Material Thickness: 6mm. Edges=12mm.	w=22 d=15 h=1,2	-	4,44	1-2

[Source cups are not included.]

Organic Life Friendly®

165



Hot Plate





Hot Plate

Eco

Front Side: Grill Shape



Rear Side: Smooth Surface



Hot Plate - Eco Series

Reference	Description	Material / Finishing	Size (cm.)	Capacity (litre)	Product Weights (kg.)	Portion (person)
LV ECO HP 2230 T13	Hot Plate, Rectangular 22X30cm.	Enamelled Cast Iron 1 Coat 1 Fire Material Thickness: 6mm. Edges=12mm.	w=30 d=22 h=1,2	-	4,2	2-3

Hot Plate



Eco

Front Side: Grill Shape



Rear Side: Smooth Surface



Hot Plate - Eco Series

Reference	Description	Material / Finishing	Size (cm.)	Capacity (litre)	Product Weights (kg.)	Portion (person)
LV ECO HP 2230 T13 K4	Hot Plate and Wooden Service Platter, Rectangular, 22X30cm.	Enamelled Cast Iron 1 Coat 1 Fire Material Thickness: 6mm. Edges=12mm.	w=30 d=22 h=1,2	-	5,7	2-3

Organic Life Friendly®



Hot Plate



Hot Plate



Eco

Front Side: Grill Shape



Rear Side: Smooth Surface



Hot Plate and Heater - Eco Series

Reference	Description	Material / Finishing	Size (cm.)	Capacity (litre)	Product Weights (kg.)	Portion (person)
LV ECO HP 2230 T13 K44	Hot Plate ve and Wooden Service Stand, Rectangular, 22X30cm.	Enamelled Cast Iron 1 Coat 1 Fire Material Thickness: 6mm. Edges=12mm.	w=30 d=22 h=1,2	-	5,94	2-3
LV STC	Heater	Metal	-	-	-	-



LAVA

Mini Plates and Dishes



Mini Plates and Dishes:

Fajita, Meat, Casserole, Breakfast, Mezze's, Appetizer, Snack, Soufle, Souces



Eco



Fajita Plate - Eco Series

Reference	Description	Material / Finishing	Size (cm.)	Capacity (litre)	Product Weights (kg.)	Portion (person)
LV ECO FT 1824 T10	Fajita Plate, 18x24.5cm. Integral Metal Handles, Oval	Enamelled Cast Iron 1 Coat 1 Fire Material Thickness: Bottom=5mm. Edges=4mm.	18x24,5	0,68	1,46	1
LV ECO FT 1824 T10 K4	Fajita Plate and Wooden Platter, 18x24.5cm. Integral Metal Handles, Oval	Enamelled Cast Iron 1 Coat 1 Fire Material Thickness: Bottom=5mm. Edges=4mm.	18x24,5	0,68	2,26	1

Organic Life Friendly®



Mini Plates and Dishes



Mini Plates and Dishes:

Fajita, Meat, Casserole, Breakfast, Mezze's, Appetizer, Snack, Soufle, Souces



Eco



Fajita Plate - Eco Series

Reference	Description	Material / Finishing	Size (cm.)	Capacity (litre)	Product Weights (kg.)	Portion (person)
LV ECO FT 1723 T11	Fajita Plate, 17x23cm. Skillet, Oval	Enamelled Cast Iron 1 Coat 1 Fire Material Thickness: Bottom=5mm. Edges=4mm.	17x23	0,47	1,29	1
LV ECO FT 1723 T11 K4	Fajita Plate and Wooden Platter, 17x23cm. Skillet, Oval	Enamelled Cast Iron 1 Coat 1 Fire Material Thickness: Bottom=5mm. Edges=4mm.	17x23	0,47	2,04	1

Organic Life Friendly®

175



Mini Plates and Dishes



Mini Plates and Dishes:

Fajita, Meat, Casserole, Breakfast, Mezze's, Appetizer, Snack, Soufle, Souces



Eco



Application

Fajita Plate - Eco Series

Reference	Description	Material / Finishing	Size (cm.)	Capacity (litre)	Product Weights (kg.)	Portion (person)
LV ECO FT 1020 T12	Fajita Plate, Kidney Shaped, 10x20cm.	Enamelled Cast Iron 1 Coat 1 Fire Material Thickness: Bottom=5mm. Edges=4mm.	10x20	0,29	0,62	1
LV ECO FT 1020 T12 K4	Fajita Plate and Wooden Platter, Kidney Shaped, 10x20cm.	Enamelled Cast Iron 1 Coat 1 Fire Material Thickness: Bottom=5mm. Edges=4mm.	10x20	0,29	1,67	1

[Souce cups are not included.]

Organic Life Friendly®



Service Dishes



Mini Plates and Dishes:

Fajita, Meat, Casserole, Breakfast, Mezze's, Appetizer, Snack, Soufle, Souces



Eco



Application

Fajita Plate, YINGYANG Shaped - Eco Series

Reference	Description	Material / Finishing	Size (cm.)	Capacity (litre)	Product Weights (kg.)	Portion (person)
LV ECO FT D 1020	Fajita Plate, YINGYANG shaped, 10x20cm.	Enamelled Cast Iron 1coat 1fire Material Thickness: Bottom=4mm. Edges=3mm.	10x20	0,35	0,85	1
LV ECO FT D 1020 K4	Fajita Plate and Wooden Platter, YINGYANG Shaped, 10x20cm. (souce cups are not included)	Enamelled Cast Iron 1coat 1fire Material Thickness: Bottom=4mm. Edges=3mm.	10x20	0,35	1,90	1
LV FT YING YANG	Double Fajita Plate and Wooden Platter, YINGYANG Shaped, 10x20cm.	Enamelled Cast Iron 1coat 1fire Material Thickness: Bottom=4mm. Edges=3mm.	1set=2ea. 10x20	0,35	2,77	1-2

Organic Life Friendly®



Mini Plates and Dishes



Mini Plates and Dishes:

Fajita, Meat, Casserole, Breakfast, Mezze's, Appetizer, Snack, Soufle, Souces



Eco



Oval Dish - Eco Series

Reference	Description	Material / Finishing	Size (cm.)	Capacity (litre)	Product Weights (kg.)	Portion (person)
LV ECO 0 TV 1510	Oval Dish, w=15 x h=2.5 x d=10 cm.	Enamelled Cast Iron 1 Coat 1 Fire Material Thickness: Bottom=5mm. Edges=4mm.	w=15 h=2.5 d=10	0,26	0,67	1
LV ECO 0 TV 1510 K4	Oval Dish and Wooden Platter, w=15 x h=2.5 x d=10 cm.	Enamelled Cast Iron 1 Coat 1 Fire Material Thickness: Bottom=5mm. Edges=4mm.	w=15 h=2.5 d=10	0,26	0,99	1

Organic Life Friendly®



Mini Plates and Dishes



Mini Plates and Dishes:

Fajita, Meat, Casserole, Breakfast, Mezze's, Appetizer, Snack, Soufle, Souces



Eco



Oval Dish - Eco Series

Reference	Description	Material / Finishing	Size (cm.)	Capacity (litre)	Product Weights (kg.)	Portion (person)
LV ECO O TV 2114	Oval Dish, w=21 x h=2.5 x d=14 cm.	Enamelled Cast Iron 1 Coat 1 Fire Material Thickness: Bottom=5mm. Edges=4mm.	w=21 h=2.5 d=14	0,52	1,06	1-2
LV ECO O TV 2114 K4	Oval Dish and Wooden Platter, w=21 x h=2.5 x d=14 cm.	Enamelled Cast Iron 1 Coat 1 Fire Material Thickness: Bottom=5mm. Edges=4mm.	w=21 h=2.5 d=14	0,52	1,58	1-2
LV ECO O TV 2114 K44	Oval Dish and Wooden Platter, w=21 x h=2.5 x d=14 cm.	Enamelled Cast Iron 1 Coat 1 Fire Material Thickness: Bottom=5mm. Edges=4mm.	w=21 h=2.5 d=14	0,52	2	1-2

[Souce cups are not included.]

Organic Life Friendly®



Mini Plates and Dishes



Mini Plates and Dishes:

Fajita, Meat, Casserole, Breakfast, Mezze's, Appetizer, Snack, Soufle, Souces



Eco



Round Dish

Reference	Description	Material / Finishing	Size (cm.)	Capacity (litre)	Product Weights (kg.)	Portion (person)
LV ECO 0 TV 1325	Oval Dish, w=25 x d=13,5 cm.	Enamelled Cast Iron 1coat 1fire Material Thickness: Bottom=4mm. Edges=3mm.	25x13,5	0,4	1,20	1
LV ECO 0 TV 1325 K4	Oval Dish and Wooden Platter, w=25 x d=13,5 cm.	Enamelled Cast Iron 1coat 1fire Material Thickness: Bottom=4mm. Edges=3mm.	25x13,5	0,4	1,85	1
LV ECO 0 TV 1325 K44	Oval Dish and Wooden platter, w=25 x d=13,5 cm. [Souce cups are not included.]	Enamelled Cast Iron 1coat 1fire Material Thickness: Bottom=4mm. Edges=3mm.	25x13,5	0,4	2,50	1

Organic Life Friendly®

185



Mini Plates and Dishes





Mini Plates and Dishes:

Fajita, Meat, Casserole, Breakfast, Mezze's, Appetizer, Snack, Soufle, Souces

Eco



Round Dish - Eco Series

Reference	Description	Material / Finishing	Size (cm.)	Capacity (litre)	Product Weights (kg.)	Portion (person)
LV ECO Y TV 12	Round Dish, Dia.(Ø)12cm.	Enamelled Cast Iron 1 Coat 1 Fire Material Thickness: Bottom=5mm. Edges=4mm.	Ø12	0,25	0,68	1
LV ECO Y TV 12 K4	Round Dish and Wooden Platter, Dia.(Ø)12cm.	Enamelled Cast Iron 1 Coat 1 Fire Material Thickness: Bottom=5mm. Edges=4mm.	Ø12	0,25	0,98	1

Mini Plates and Dishes:

Fajita, Meat, Casserole, Breakfast, Mezze's, Appetizer, Snack, Soufle, Souces



Eco



Round Dish - Eco Series

Reference	Description	Material / Finishing	Size (cm.)	Capacity (litre)	Product Weights (kg.)	Portion (person)
LV ECO Y TV 16	Round Dish, Dia.(Ø)16cm.	Enamelled Cast Iron 1 Coat 1 Fire Material Thickness: Bottom=5mm. Edges=4mm.	Dia.(Ø)16	0,46	0,99	1-2
LV ECO Y TV 16 K4	Round Dish and Wooden Platter, Dia.(Ø)16cm.	Enamelled Cast Iron 1 Coat 1 Fire Material Thickness: Bottom=5mm. Edges=4mm.	Dia.(Ø)16	0,46	1,39	1-2

Organic Life Friendly®



Mini Plates and Dishes



Mini Plates and Dishes:

Fajita, Meat, Casserole, Breakfast, Mezze's, Appetizer, Snack, Soufle, Souces



Eco



Round Dish - Eco Series

Reference	Description	Material / Finishing	Size (cm.)	Capacity (litre)	Product Weights (kg.)	Portion (person)
LV ECO Y TV 16 K44	Round Dish and Wooden, Service Platter, Dia.(Ø)16cm.	Enamelled Cast Iron 1 Coat 1 Fire Material Thickness: Bottom=5mm. Edges=4mm.	Dia.Ø16	0,46	1,74	1-2

[Souce cups are not included.]

Organic Life Friendly



Mini Plates and Dishes



Mini Plates and Dishes:

Fajita, Meat, Casserole, Breakfast, Mezze's, Appetizer, Snack, Soufle, Souces



Eco



Round Dish

Reference	Description	Material / Finishing	Size (cm.)	Capacity (litre)	Product Weights (kg.)	Portion (person)
LV ECO Y TV 18	Round Dish, dia.(Ø)18 cm.	Enamelled Cast Iron 1coat 1fire Material Thickness: Bottom=4mm. Edges=3mm.	(Ø)18	0,6	1,25	1
LV ECO Y TV 18 K4	Round Dish and Wooden Platter, dia.(Ø)18cm.	Enamelled Cast Iron 1coat 1fire Material Thickness: Bottom=4mm. Edges=3mm.	(Ø)18	0,6	1,90	1
LV ECO Y TV 18 K44	Round Dish and Wooden Service Platter dia.(Ø)18cm. (Souce cups are not included.)	Enamelled Cast Iron 1coat 1fire Material Thickness: Bottom=4mm. Edges=3mm.	(Ø)18	0,6	2,65	1

Organic Life Friendly®



Mini Plates and Dishes:

Fajita, Meat, Casserole, Breakfast, Mezze's, Appetizer, Snack, Soufle, Souces

Eco



Round Dish - Eco Series

Reference	Description	Material / Finishing	Size (cm.)	Capacity (litre)	Product Weights (kg.)	Portion (person)
LV ECO Y TV 20	Round Dish, Dia.(Ø)20cm.	Enamelled Cast Iron 1 Coat 1 Fire Material Thickness: Bottom=5mm. Edges=4mm.	Dia.(Ø)20	0,74	1,38	2-3
LV ECO Y TV 20 K4	Round Dish and Wooden Platter, Dia.(Ø)20cm.	Enamelled Cast Iron 1 Coat 1 Fire Material Thickness: Bottom=5mm. Edges=4mm.	Dia.(Ø)20	0,74	2,03	2-3

Mini Plates and Dishes:

Fajita, Meat, Casserole, Breakfast, Mezze's, Appetizer, Snack, Soufle, Souces



Eco



Round Dish - Eco Series

Reference	Description	Material / Finishing	Size (cm.)	Capacity (litre)	Product Weights (kg.)	Portion (person)
LV ECO Y TV 20 K44	Round Dish and Wooden, Service Platter, Dia.(Ø)20cm.	Enamelled Cast Iron 1 Coat 1 Fire Material Thickness: Bottom=5mm. Edges=4mm.	Dia.Ø20	0,74	2,43	3-4

[Souce cups are not included.]

Organic Life Friendly®



Mini Plates and Dishes



Mini Plates and Dishes:

Fajita, Meat, Casserole, Breakfast, Mezze's, Appetizer, Snack, Soufle, Souces



Eco



Round Skillet - Eco Series

Reference	Description	Material / Finishing	Size (cm.)	Capacity (litre)	Product Weights (kg.)	Portion (person)
LV ECO Y STV 12	Round Skillet Dia.(Ø)12 cm.	Enamelled Cast Iron 1 Coat 1 Fire Material Thickness: Bottom=5mm. Edges=4mm.	Ø12	0,24	0,61	1
LV ECO Y STV 12 K4	Round Skillet and Wooden Platter, Dia.(Ø)12 cm.	Enamelled Cast Iron 1 Coat 1 Fire Material Thickness: Bottom=5mm. Edges=4mm.	Ø12	0,24	0,91	1

Organic Life Friendly®



Mini Plates and Dishes:

Fajita, Meat, Casserole, Breakfast, Mezze's, Appetizer, Snack, Soufle, Souces

Eco



Round Skillet - Eco Series

Reference	Description	Material / Finishing	Size (cm.)	Capacity (litre)	Product Weights (kg.)	Portion (person)
LV ECO Y STV 16	Round Skillet Dia.(Ø)16 cm.	Enamelled Cast Iron 1 Coat 1 Fire Material Thickness: Bottom=5mm. Edges=4mm.	Dia.(Ø)16	0,45	0,87	1-2
LV ECO Y STV 16 K4	Round Skillet and Wooden Platter, Dia.(Ø)16 cm.	Enamelled Cast Iron 1 Coat 1 Fire Material Thickness: Bottom=5mm. Edges=4mm.	Dia.(Ø)16	0,45	1,27	1-2

Mini Plates and Dishes:

Fajita, Meat, Casserole, Breakfast, Mezze's, Appetizer, Snack, Soufle, Souces



Eco



Round Skillet - Eco Series

Reference	Description	Material / Finishing	Size (cm.)	Capacity (litre)	Product Weights (kg.)	Portion (person)
LV ECO Y STV 16 K44	Round Skillet and Wooden Service Platter; Dia.(Ø)16 cm [Souce cups are not included.]	Enamelled Cast Iron 1 Coat 1 Fire Material Thickness: Bottom=5mm. Edges=4mm.	Dia.Ø16	0,45	1,92	1-2

Organic Life Friendly®



Mini Plates and Dishes



Mini Plates and Dishes:

Fajita, Meat, Casserole, Breakfast, Mezze's, Appetizer, Snack, Soufle, Souces



Eco



Square Dish - Eco Series

Reference	Description	Material / Finishing	Size (cm.)	Capacity (litre)	Product Weights (kg.)	Portion (person)
LV ECO P TV 1212	Square Dish 12x12cm.	Enamelled Cast Iron 1 Coat 1 Fire Material Thickness: Bottom=5mm. Edges=4mm.	w=12 h=2.5 d=12	0,33	0,75	1
LV ECO P TV 1212 K4	Square Dish and Wooden Platter, 12x12cm.	Enamelled Cast Iron 1 Coat 1 Fire Material Thickness: Bottom=5mm. Edges=4mm.	w=12 h=2.5 d=12	0,33	1,11	1

Organic Life Friendly®

201



Mini Plates and Dishes



LAVA





Mini Plates and Dishes:

Fajita, Meat, Casserole, Breakfast, Mezze's, Appetizer, Snack, Soufle, Souces

Eco



Rectangular Dish - Eco Series

Reference	Description	Material / Finishing	Size (cm.)	Capacity (litre)	Product Weights (kg.)	Portion (person)
LV ECO P TV 1215	Rectangular Dish 12X15cm.	Enamelled Cast Iron 1 Coat 1 Fire Material Thickness: Bottom=5mm. Edges=4mm.	w=12 d=15 h=2.5	0,42	0,89	1-2
LV ECO P TV 1215 K4	Rectangular Dish and Wooden Platter 12X15cm.	Enamelled Cast Iron 1 Coat 1 Fire Material Thickness: Bottom=5mm. Edges=4mm.	w=12 d=15 h=2.5	0,42	1,29	1-2

Mini Plates and Dishes:

Fajita, Meat, Casserole, Breakfast, Mezze's, Appetizer, Snack, Soufle, Souces



Eco



Rectangular Dish - Eco Series

Reference	Description	Material / Finishing	Size (cm.)	Capacity (litre)	Product Weights (kg.)	Portion (person)
LV ECO P TV 1215 K44	Rectangular Dish and Wooden Service Platter 12X15cm. [Souce cups are not included.]	Enamelled Cast Iron 1 Coat 1 Fire Material Thickness: Bottom=5mm. Edges=4mm.	w=12 d=15 h=2.5	0,42	1,59	1-2



Mini Plates and Dishes



Mini Plates and Dishes:

Fajita, Meat, Casserole, Breakfast, Mezze's, Appetizer, Snack, Soufle, Souces



Eco



Souffle or Souce Pot - Eco Series

Reference	Description	Material / Finishing	Size (cm.)	Capacity (litre)	Product Weights (kg.)	Portion (person)
LV ECO SK 8 T14	Souffle or Souce Pot, Dia.Ø8, Round,	Enamelled Cast Iron 1 Coat 1 Fire Material Thickness: Bottom=5mm. Edges=4mm.	Dia.Ø8	0,17	0,44	1
LV ECO SK 8 T14 K4	Souffle or Souce Pot and Wooden Platter, Dia.Ø8, Round,	Enamelled Cast Iron 1 Coat 1 Fire Material Thickness: Bottom=5mm. Edges=4mm.	Dia.Ø8	0,17	0,57	1

Organic Life Friendly®



Tortilla and Souce Cups



Tortilla and Souce Cups



Eco



Souce Cup - Eco Series

Reference	Description	Material / Finishing	Product Weights (kg.)
LV MLMN SK	Souce cup, Melamin	Melamin	0,05
LV PRSL SK	Souce cup, Porcelain	Porcelain	0,05
LV AS TK 19	Tortilla Cup Dia. (Ø)19 cm.	Wooden with Natural Color	0,6
LV ECO SK 3x8 T	Triple Souce Cup, Each Section Dia. (Ø)8 cm.	Enamelled Cast Iron 1coat 1fire Material Thickness: Bottom=5mm. Edges=4mm.	0,47
LV ECO SK 3x8	Triple Souce Cup, Each Section Dia. (Ø)8 cm.	Enamelled Cast Iron 1coat 1fire Material Thickness: Bottom=5mm. Edges=4mm.	0,47



Wooden Service Platter



Wooden Service Boards / Platters / Stands / Servicing Platter



Wooden Service Platter

Reference	Description	Material / Finishing	Size (cm.)	Capacity (litre)	Product Weights (kg.)	Portion (person)
LV AS 146	Wooden Service Platter 60x15cm.	Beechwood	60x15x2	-	1,16	4
LV AS 147	Wooden Service Platter With Porcelain Surface 60x15cm.	Beechwood + Porcelain Surface	60x15x2	-	1,36	4



Tealight Unit



Wooden Service Boards / Platters / Stands / Servicing Platter



Wooden Tealight Unit

Reference	Description	Material / Finishing	Size (cm.)	Capacity (litre)	Product Weights (kg.)	Portion (person)
LV AS 148	Wooden Stand, Housing For Single Tealight 16x16cm.	Beechwood Supported With Stainless Steel Parts	16x16x2,5	-	0,66	-
LV AS 149	Wooden Stand, Housing For Triple Tealight 36x20cm.	Beechwood Supported With Stainless Steel Parts	36x20x2,5	-	1,84	-



Wooden Service Board



Wooden Service Boards / Platters / Stands / Servicing Platter



Wooden Service Board

Reference	Description	Material / Finishing	Size (cm.)	Capacity (litre)	Product Weights (kg.)	Portion (person)
LV AS 150	Wooden Service Board, 20x30cm. w/ Stainless Steel Handles	Beechwood Supported With Stainless Steel Handles	20x30x2,5	-	1,32	1-2
LV AS 151	Wooden Service Board, 25x35cm. w/ Stainless Steel Handles	Beechwood Supported With Stainless Steel Handles	25x35x2,5	-	1,96	1-2



Olive Service Board



Wooden Service Boards / Platters / Stands / Servicing Platter



Olive Service Board

Reference	Description	Material / Finishing	Size (cm.)
LV AS 152	Olive Service Board, Small size, Freestyle	Olive Wood	Free Style, Small
LV AS 153	Olive Service Board, Medium size, Freestyle	Olive Wood	Free Style, Medium
LV AS 154	Olive Service Board, Big size, Freestyle	Olive Wood	Free Style, Large



Wooden Service Platter



Wooden Service Boards / Platters / Stands / Servicing Platter



Iroko Service Board

Reference	Description	Material / Finishing	Size (cm.)	Portion (person)
LV AS 201	Wooden Service Board, 25x35cm. Iroko Wood	Iroko wood	25x35x2,5	1-2
LV AS 202	Wooden Service Board, 27x47cm. Iroko Wood	Iroko wood	27x47x2,5	1-2
LV AS 203	Wooden Service Board, Dia.(Ø)30cm. Iroko Wood	Iroko wood	(Ø)30	1-2
LV AS 204	Wooden Service Board, 27x38cm. Special Shape Iroko Wood	Iroko wood	27x38x2,5	1-2



Wooden Service, Serving Dish, Serving Platter



Wooden Service Boards / Platters / Stands / Servicing Platter



LV AS 157



LV AS 158



LV AS 156

Wooden Service, Serving Dish, Serving Platter

Reference	Description	Material / Finishing	Size (cm.)	Capacity (litre)	Product Weights (kg.)	Portion (person)
LV AS 156	Wooden Service Board For Wine Glass, 33x15cm.	Beechwood	33x15	-	0,41	1
LV AS 157	Serving Platter, Sheet Steel, Square, Laser Cutting, 34x34cm. Standard Color: White and Copper, (Any color and any pattern design is possible with order.)	Metal With Beechwood	34x34	-	1,20	1
LV AS 158	Serving Dish, Sheet Steel, Square, Laser Cutting, 25x25cm. Standard Color: White and Copper, (Any color and any pattern design is possible with order.)	Metal	25x25	-	1	2-4



Wooden Service Platter



Wooden Service Boards / Platters / Stands / Servicing Platter



LVAS 159



LVAS 161



LVAS 160



LVAS 162

Wooden Service Platter

Reference	Description	Material / Finishing	Size (cm.)	Capacity (litre)	Product Weights (kg.)	Portion (person)
LVAS 159	Wooden Service Platter 20x30cm. With Porcelain Surface and Stainless Steel Handles	Beechwood + Porcelain Surface + Stainless Steel Handles	20x30x2,5	-	1,54	1-2
LVAS 160	Wooden Service Platter 25x35cm. With Porcelain Surface and Stainless Steel Handles	Beechwood + Porcelain Surface + Stainless Steel Handles	25x35x2,5	-	2,26	1-2
LVAS 161	Wooden Service Platter 20x30cm. With Porcelain Surface	Beechwood + Porcelain Surface	20x30x2,5	-	1,26	1-2
LVAS 162	Wooden Service Platter 25x35cm. With Porcelain Surface	Beechwood + Porcelain Surface	25x35x2,5	-	1,71	1-2



Wooden Service Platter



Wooden Service Boards / Platters / Stands / Servicing Platter



Wooden Service Platter

Reference	Description	Material / Finishing	Size (cm.)	Capacity (litre)	Product Weights (kg.)	Portion (person)
LV AS 163	Wooden Service Platter, Elips, Dia.(Ø)30cm. With Porcelain Surface	Beechwood + Porcelain Surface	(Ø)30 Elips	-	0,93	1-2
LV AS 164	Wooden Service Platter, Elips, Dia.(Ø)35cm. With Porcelain Surface	Beechwood + Porcelain Surface	(Ø)35 Elips	-	1,46	1-2

LAVA Culinary Olympic Team Leader Chef Rabet Ince says;

Cooking has always been passion for me throughout my 17-year career. I have always remembered and will remember the saying of Mawlana during my career. "If you add love to food, that would be a real food; If you don't add love to food, that wouldn't be a real food!". I add my love to all foods I cook because the food to which love is not added is like a marriage without love.

To explore novelties, I make researches about my profession all the time. One of them was to search the receptacles used to cook in Ottoman and Anatolian kitchens. I first found cast iron boilers and pots.

During my visit to Zuchex exhibition last year, I explored Lava cast iron products. At the beginning, the slogan of "Food Full of Love is best cooked with Lava..." reminded me of the professional principle of Mawlana. First, I thought we speak the same language. The officials of Lava, with whom I shared my researches about the Ottoman and Anatolian cuisine, gave me very good ideas and prepared 9 griddles and pots for me. I tried my first food which is lamb's shank with gum mastic. It became incredibly successful because cast iron pots grab the heat rapidly and release it so slowly. The food reached an excellent taste thanks to the naturalness of cast iron (it was not covered by chemical material at all). I learned that as the materials that produce carcinogenic agent are used in teflon and steel frying pans, it extremely harms our body and the food we cook. Now, I use Lava cast iron pot and pan in my kitchen at home. I threw all teflon steel pans into waste bin.

The key is to make difference. Making difference starts with researching. The more you research, the more successful foods you can cook. With Lava, I create a distinguished, privileged, tasteful and extraordinary cuisine of Turkey upon my own cuisine culture.

LAVA



